

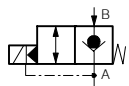
Gewinde- und Flanschanschluss-Körper NG 10 Typ DC-12

- Anschlüsse A und B = G 1/2"
- Werkstoff: Stahl
- Masse: 1,65 kg

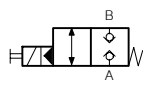
1. Sinnbilder

Der Gewindeanschlusskörper DC-12 kann für folgende Patronenventile verwendet werden:

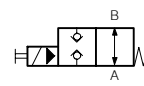
Wegepatronen, elektr. betätigt



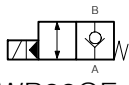
WVPES-137-CG-10



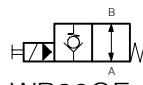
WS22GN..-10 *



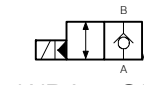
WS22ON..-10 *



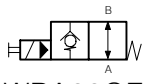
WR22GE..-10 *
WR22GN..-10 *



WR22OE..-10 *
WR22ON..-10 *



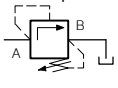
WRA22GE..-10 *
WRA22GN..-10 *



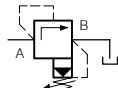
WRA22OE..-10 *
WRA22ON..-10 *

* mit Adapterring C

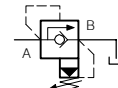
Druckpatronen, hand betätigt



DDPB-1C-10

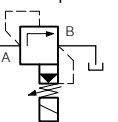


DVPA-1-10



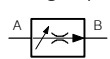
DVPA-RV-1-10

Druckpatronen, elektr. betätigt



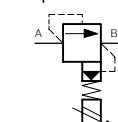
WUVP..-1..-10

Mengenpatronen



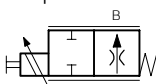
MRP-2D-10 *

Prop.-Druckpatronen

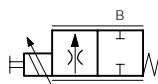


DBVSA-1CG...-10

Prop.-Drosselpatronen



MDRPA-..O-10 *



MDRPA-..G-10 *

Sperrpatronen



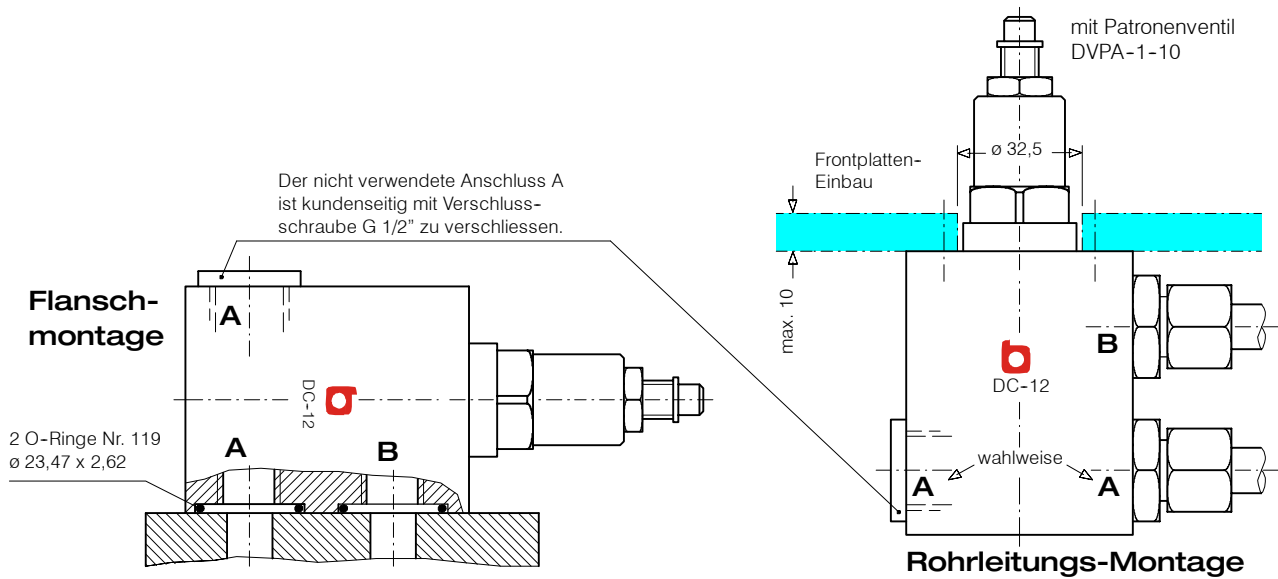
RVPA-10

Q-Sensoren

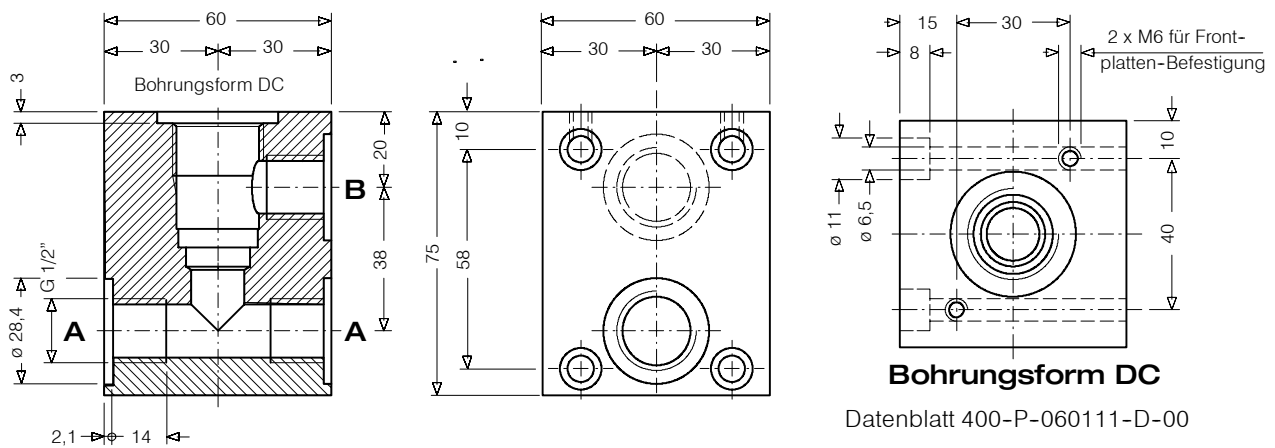


QSBD-10 *

2. Anwendungsbeispiele



3. Abmessungen



Datenblatt 400-P-060111-D-00

BUCHER HYDRAULICS

Germany

Phone +49 7742 85 20
Fax +49 7742 71 16
info.de@bucherhydraulics.com

France

Phone +33 389 64 22 44
Fax +33 389 65 28 78
info.fr@bucherhydraulics.com

Netherlands

Phone +31 79 34 26 24 4
Fax +31 79 34 26 28 8
info.nl@bucherhydraulics.com

UK

Phone +44 24 76 35 35 61
Fax +44 24 76 35 35 72
info.uk@bucherhydraulics.com

USA

Phone +1 262 605 82 80
Fax +1 262 605 82 78
info.us@bucherhydraulics.com

Switzerland

Phone +41 33 67 26 11 1
Fax +41 33 67 26 10 3
info.ch@bucherhydraulics.com

Italy

Phone +39 0522 92 84 11
Fax +39 0522 51 32 11
info.it@bucherhydraulics.com

Austria

Phone +43 6216 44 97
Fax +43 6216 44 97 4

China

Phone +86 10 64 44 32 88
Fax +86 10 64 44 32 35
info.bj@bucherhydraulics.com

Product Center (Elevator)

Phone +41 41 757 03 33
Fax +41 41 757 16 49
info.nh@bucherhydraulics.com

Wir behalten uns das Recht auf technische Änderungen vor.