

Gewinde- und Flanschanschluss-Körper NG 10 Typ DD-12, DDY-12*

- Anschlüsse A und B = G 1/2"
- Anschluss Z = G 1/8" bzw. M4

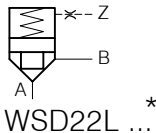
- Werkstoff: Stahl

- Masse: 2,0 kg

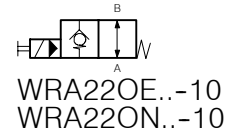
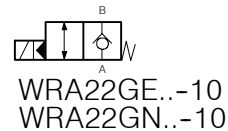
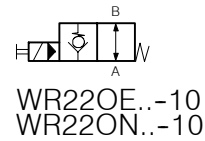
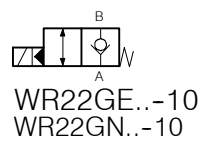
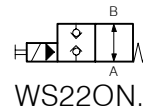
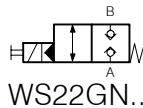
1. Sinnbilder

Der Gewindeanschlusskörper DD-12 kann für folgende Patronenventile verwendet werden:

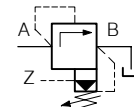
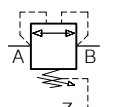
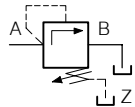
Wegepatronen



Wegepatronen, elektr. betätigt



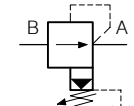
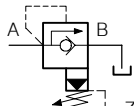
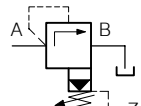
Druckpatronen, hand betätigt



DDPB-3D-10*

DDPDB-3D-10*

DVPA-2-10*

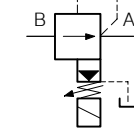
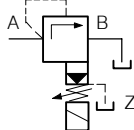
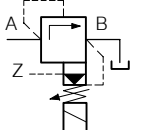


DVPA-3-10*

DVPA-RV-3-10*

DRPA-5-10*

Druckpatronen, elektr. betätigt

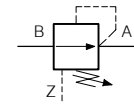
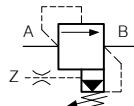
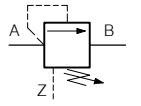


WUVP...-2-10*

WUVP...-3-10*

WDRVPB-5-10*

Druckwaagepatronen, handbetätigt

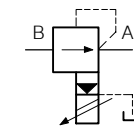
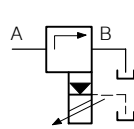
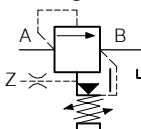


DWDPA-2D-10*

DWVPA-2-10*

DWDPA-5D-10*

Druckwaagepatronen,
elektr. geschaltet

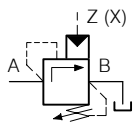


WDWVPB-2-10*

DVPRA-3 ...-10*

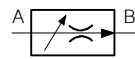
DRPRA-5 ...-10*

Abschaltpatrone



DWPA-2-10 /*
DWPAU-2-10

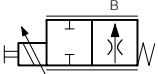
Mengenregelpatronen



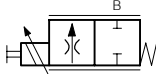
MRP-2D-10

* Y-Anschluss nicht verschlossen

Prop.-Drosselpatronen



MDRPA-..O-10



MDRPA-..G-10

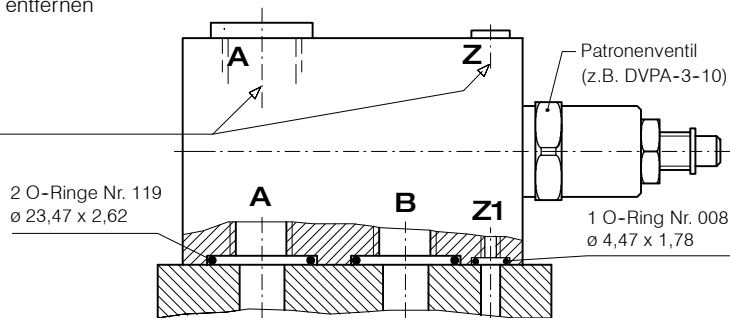
Volumenzähler



QSBD-10

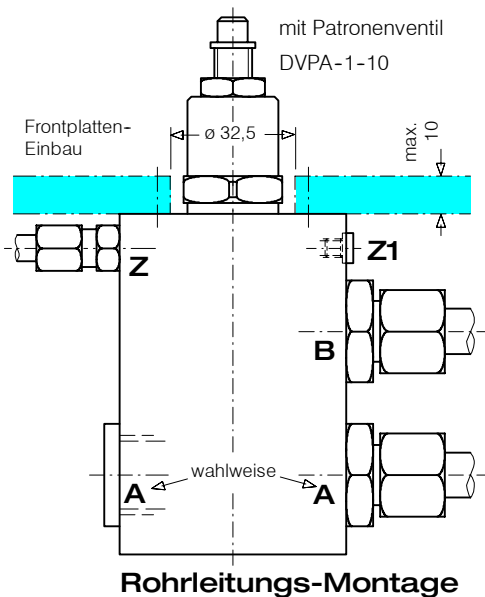
2. Anwendungsbeispiele

Bei Flanschmontage sind diese beiden Anschlüsse kundenseitig mit Verschlusschrauben G 1/8", bzw. G 1/2" zu verschliessen und die Schraube M4 in Z1 zu entfernen



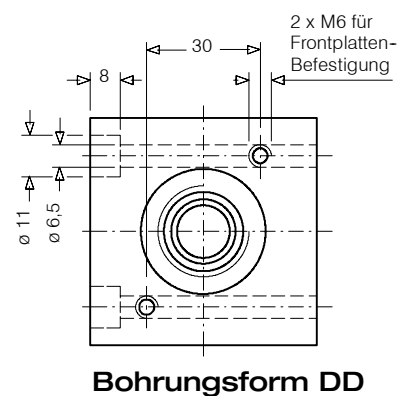
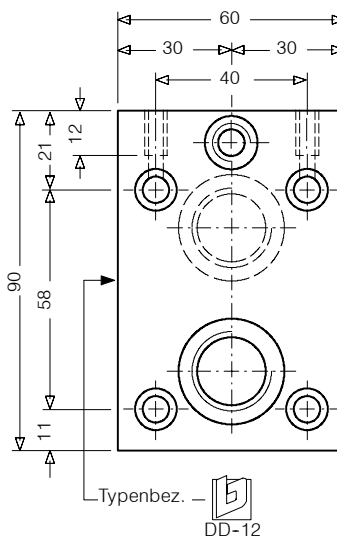
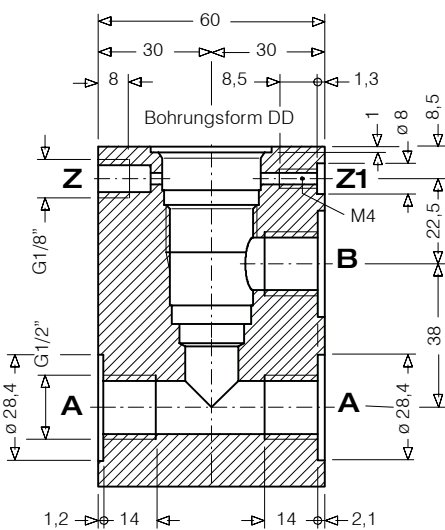
Flanschmontage

Ab Werk ist der Anschluss Z1 mit Verschlusschraube M4 verschlossen



Rohrleitungs-Montage

3. Abmessungen



Bohrungsform DD

BUCHER HYDRAULICSwww.bucherhydraulics.com**Germany**

Phone +49 7742 85 20
Fax +49 7742 71 16
info.de@bucherhydraulics.com

France

Phone +33 389 64 22 44
Fax +33 389 65 28 78
info.fr@bucherhydraulics.com

Netherlands

Phone +31 79 34 26 24 4
Fax +31 79 34 26 28 8
info.nl@bucherhydraulics.com

UK

Phone +44 24 76 35 35 61
Fax +44 24 76 35 35 72
info.uk@bucherhydraulics.com

USA

Phone +1 262 605 82 80
Fax +1 262 605 82 78
info.wi@bucherhydraulics.com

Switzerland

Phone +41 33 67 26 11 1
Fax +41 33 67 26 10 3
info.ch@bucherhydraulics.com

Italy

Phone +39 0522 92 84 11
Fax +39 0522 51 32 11
info.it@bucherhydraulics.com

Austria

Phone +43 6216 44 97
Fax +43 6216 44 97 4

China

Phone +86 10 64 44 32 88
Fax +86 10 64 44 32 35
info.bj@bucherhydraulics.com

Product Center (Elevator)

Phone +41 41 757 03 33
Fax +41 41 757 16 49
info.nh@bucherhydraulics.com

Wir behalten uns das Recht auf technische Änderungen vor.