

# Check Valves, Size 04 ... 16

## Spherical Poppet-type, Screw-in Design

### Series RKVG ... 80 l/min, 350 bar (500 bar)



## 1 General

### 1.1 Product description

Series RKVG units are screw-in check valves with mounting threads ranging from G 1/8" to G 3/4". For other thread forms, contact Bucher Hydraulics.

The valves prevent flow against the screw-in direction (A → B), with no leakage. In the opposite direction, the opening pressure is 0.5 bar.

The cavities are identical to those of the RVE/RKVE valves (REG-02 cavity only).

The units are spring-closed poppet valves with hardened poppets and seats. The poppet is fully guided, with a spherically shaped sealing surface.

A metal cutting lip seals the leakage path between the valve and cavity wall.

### 1.2 Advantages

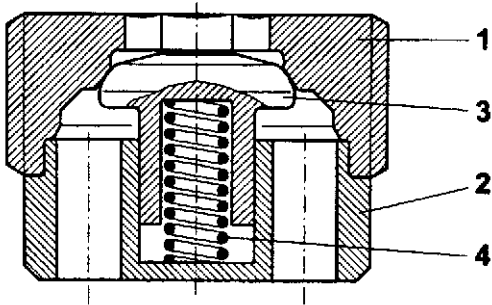
- High pressure rating
- Compact construction
- Virtually zero leakage
- Spring is enclosed
- Damped and undamped models

## 2 Main characteristics

Designation	check valve / non-return valve
Design	spherical poppet design
Mounting method	screw-in cartridge
Size	nominal 4...16 mm. See Table in section 5, Dimensions
Dimensions	see Table in section 5, Dimensions
Mounting attitude	unrestricted
No-flow direction	A → B (see symbol)
Operating pressure range	... 350 bar (for higher pressures, contact Bucher Hydraulics)
Opening pressure	approx. 0.5 bar for all sizes
Flow rate, Q max.	... 80 l/min
Fluid	HL and HLP hydraulic oils to DIN 51524
Temperature range	-30°C... +80°C
Viscosity range	10... 500 mm <sup>2</sup> /s (cSt)
Min. fluid cleanliness	18/14 to ISO 4406 / CETOP RP70H, 8...9 to NAS 1638

For applications outside these parameters, please contact Bucher Hydraulics.

### 3 Schematic section

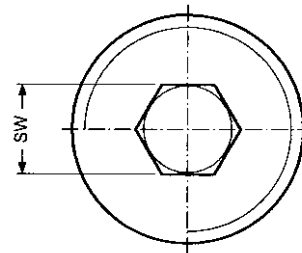
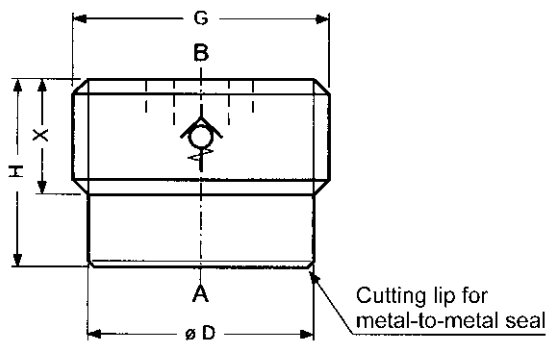


### 4 Components

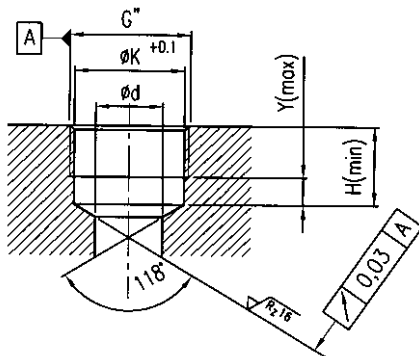
Item	Qty.	Description
1	1	Valve seat
2	1	Valve body
3	1	Valve poppet
4	1	Spring

### 5 Dimensions

#### 5.1 Valve



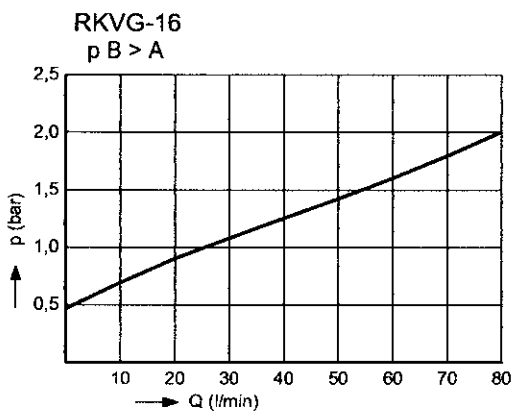
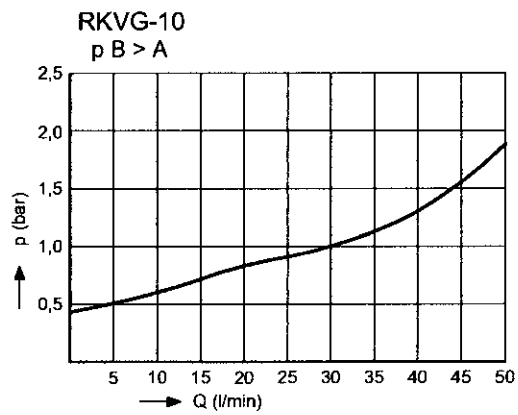
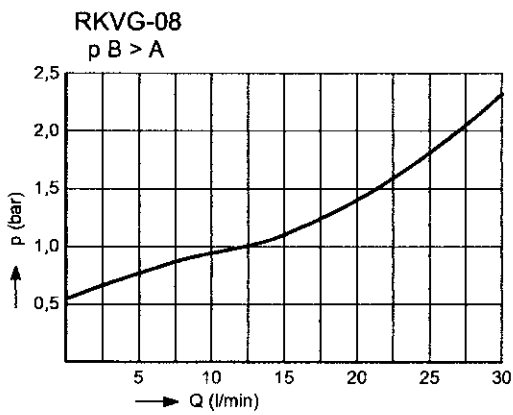
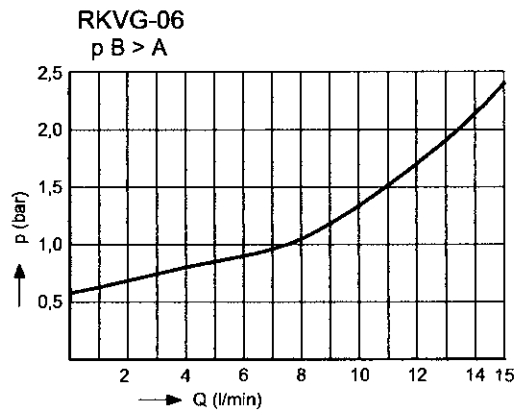
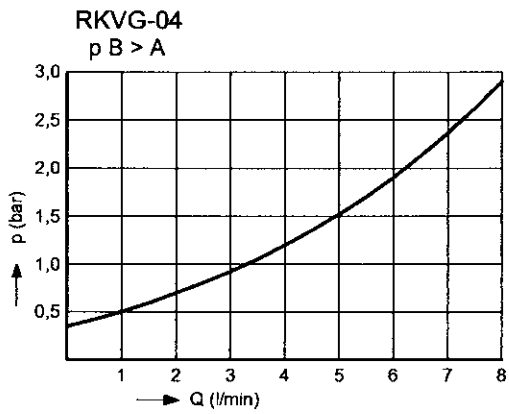
#### 5.2 Dimensions - cavity type REG-02



	Q Nom = Qmax (l/min)	G	ØD	H	X	SW	Mass (g)	ØK	Ød <sub>max</sub>	h <sub>min</sub>	Y <sub>max</sub>	Tightening torque (Nm)
RKVG-04	8	G 1/8"	8.5	9.0	5.5	3,5	4	8.70	6.0	10	2.5	15
RKVG-06	15	G 1/4"	11.6	11.3	6.3	5	8	11.75	8.0	13	3.0	25
RKVG-08	30	G 3/8"	14.9	13.0	7.8	6	14	15.25	11.5	14	3.5	30
RKVG-10	50	G 1/2"	18.8	15.0	9.6	8	24	19.00	15.5	16	4.0	40
RKVG-16	80	G 3/4"	24.2	18.5	11.5	10	42	24.50	20.0	20	5.0	60

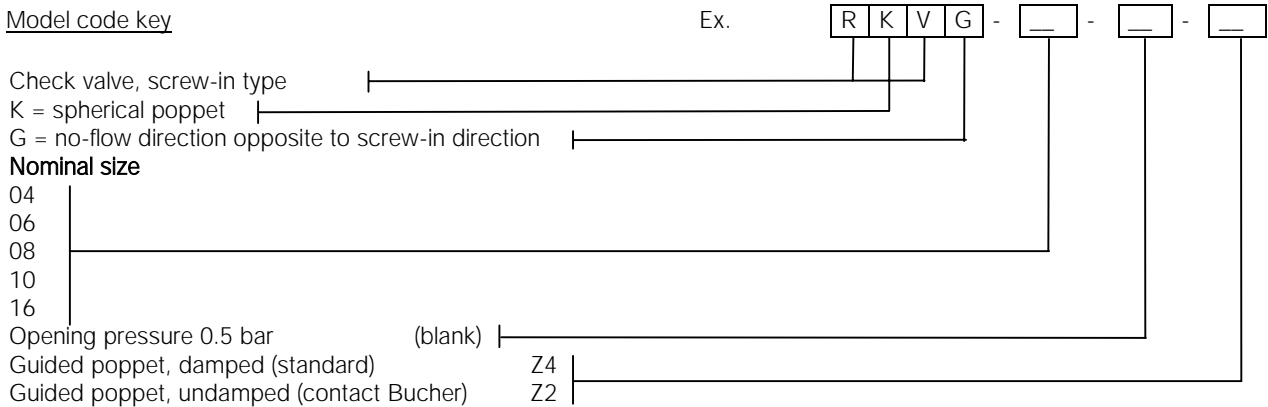
## 6 Performance graphs

measured with oil viscosity 33 mm<sup>2</sup>/s (cSt)



## 7 Ordering details

### Model code key



Contact Bucher Hydraulics for further advice on:

- valves with metric or UNF threads
- other opening pressures
- special materials
- customised designs

## 8 Design and installation notes

The installation dimensions and tolerances must be maintained.

ated directly before the check valve (see Data Sheet 170-P-059000-E-00).

- valve components are not deformed by the use of excessive force

We offer form tools for hire or sale.

When fitting the valve, take particular care to ensure that:

Use the specified tightening torque when fitting the valve.

Referring to the free-flow direction, nozzles and orifices must not be situ-

- the valve cutting lip is firmly seated on the sealing surface, but that ...

## 9 Application notes

The maximum operating pressure must not be exceeded and any pressure peaks must be taken into consideration.

In applications such as accumulator circuits, where sudden pressure can be applied to the valve in the free-flow direction, ensure that the specified flow ratings are not exceeded. In dynamic accumulator circuits, use the internally damped valves.

Buyers bear the sole responsibility for ensuring that the selected products are suitable for their applications. Buyers normally establish this by undertaking qualification programs on test stands, or by evaluating the performance of prototype machines or systems.

### BUCHER HYDRAULICS

#### Germany

Tel.: +49 7742 8520  
Fax: +49 7742 7116  
info.de@bucherhydraulics.com

#### France

Tel.: +33 389 64 22 44  
Fax: +33 389 65 28 78  
info.fr@bucherhydraulics.com

#### Netherlands

Tel.: +31 7934 26 24 4  
Fax: +31 7934 26 28 8  
info.nl@bucherhydraulics.com

#### UK

Tel.: +44 2476 35 35 61  
Fax: +44 2476 35 35 72  
info.uk@bucherhydraulics.com

[www.bucherhydraulics.com](http://www.bucherhydraulics.com)

#### USA

Tel.: +1 262 605 82 80  
Fax: +1 262 605 82 78  
info.wi@bucherhydraulics.com

#### Switzerland

Tel.: +41 33 672 61 11  
Fax: +41 33 672 61 03  
info.ch@bucherhydraulics.com

#### Italy

Tel.: +39 0522 92 84 11  
Fax: +39 0522 51 32 11  
info.it@bucherhydraulics.com

#### Austria

Tel.: +43 6216 44 97  
Fax: +43 6216 44 97 4  
info.at@bucherhydraulics.com

#### China

Tel.: +86 10 68 31 41 08  
Fax: +86 10 68 31 41 21  
info.bi@bucherhydraulics.com

#### Product Center, Elevator Hydraulics

Tel.: +41 41 757 03 33  
Fax: +41 41 757 05 00  
Info.nh@bucherhydraulics.com

We reserve the right of modification without prior notice.