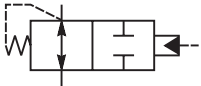
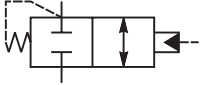
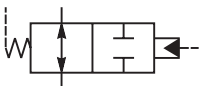
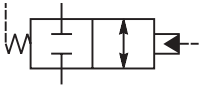


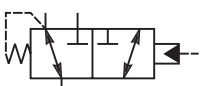

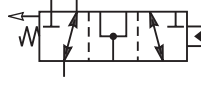


**Contents**

**Directional Control Valves**

	SERIES	CAVITY	DESCRIPTION	FLOW LPM/GPM	PRESSURE BAR/PSI	PAGE NO.
	R04C3	C10-3	2 Way, Normally Open, Pilot to Close	80/21	420/6000	DC1-DC2
	R04D3	C10-3	2 Way, Normally Closed, Pilot to Open	100/26	420/6000	DC3
	R04A4	C10-4	2 Way, Normally Open, Pilot to Close, External Vent	80/21	420/6000	DC4
	R04B4	C10-4	2 Way, Normally Closed, Pilot to Open, External Vent	80/21	420/6000	DC5
	DH103	C10-4	3 Way, External Pilot, Normally Open, Vent to Atmosphere	38/10	240/3500	DC7-DC8
	N04A4	C10-4	3 Way, Internal Vent, External Pilot	90/24	420/6000	DC9
	N04B4	C10-4	3 Way, Internal Vent, External Pilot	90/24	420/6000	DC10
	N04G4	C10-4	3 Way, Vent to Atmosphere, External Pilot	85/22	420/6000	DC11
	N04H4	C10-4	3 Way, Vent to Atmosphere, External Pilot	85/22	420/6000	DC12
	N5A125	5A	3 Way, 2 Position, External Drain, Open Transition	160/42	420/6000	DC13
	N5A300	100-1	3 Way, 2 Position, External Drain, Open Transition	400/105	420/6000	DC14
	N5B125	5A	3 Way, 2 Position, External Drain, Closed Transition	160/42	420/6000	DC15
	N5B300	100-1	3 Way, 2 Position, External Drain, Closed Transition	400/105	420/6000	DC16
	N5C125	5A	3 Way, 2 Position, External Drain, Diverter Valve, Normally Open	160/42	420/6000	DC17
	N5C300	100-1	3 Way, 2 Position, External Drain, Diverter Valve, Normally Open	400/105	420/6000	DC18
	N5D125	5A	3 Way, 2 Position, External Drain, Diverter Valve, Normally Closed	160/42	420/6000	DC19
	N5D300	100-1	3 Way, 2 Position, External Drain, Diverter Valve, Normally Closed	400/105	420/6000	DC20

- CV**  
Check Valves
- SH**  
Shuttle Valves
- LM**  
Load/Motor Controls
- FC**  
Flow Controls
- PC**  
Pressure Controls
- LE**  
Logic Elements
- DC**  
Directional Controls
- MV**  
Manual Valves
- SV**  
Solenoid Valves
- PV**  
Proportional Valves
- CE**  
Coils & Electronics
- BC**  
Bodies & Cavities
- TD**  
Technical Data



**Technical Information**

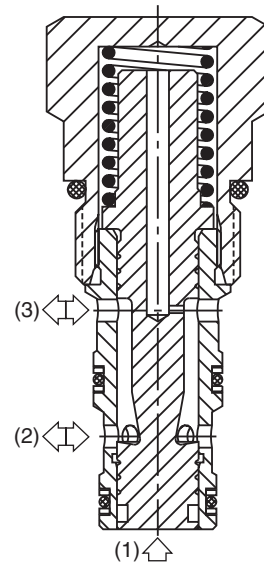
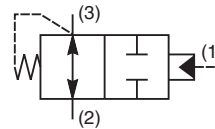
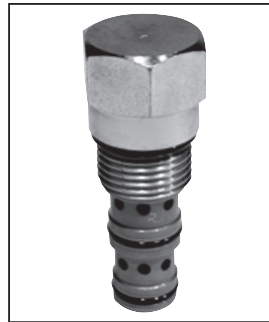
- CV** Check Valves
- SH** Shuttle Valves
- LM** Load/Motor Controls
- FC** Flow Controls
- PC** Pressure Controls
- LE** Logic Elements
- DC** Directional Controls
- MV** Manual Valves
- SV** Solenoid Valves
- PV** Proportional Valves
- CE** Coils & Electronics
- BC** Bodies & Cavities
- TD** Technical Data

**General Description**

Diverter Valve, Normally Open, Pilot to Close Vent and Pressure Compensating Flow Control Element.

**Features**

- Two switching and one compensating spring available
- Very accurate flow regulation when used with separate orifice
- Sealed pilot option available
- Industry common cavity
- Hardened working parts for maximum durability
- All external parts zinc plated

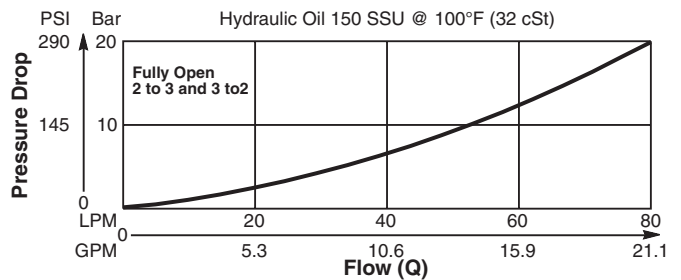


**Specifications**

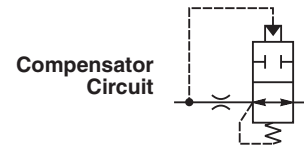
<b>Rated Flow</b>	80 LPM (21 GPM)
<b>Nominal Flow @ 7 Bar (100 PSI)</b>	<b>Diverter</b> - 40 LPM (10 GPM) <b>Compensator</b> - See Application
<b>Maximum Inlet Pressure</b>	420 Bar (6000 PSI)
<b>Pilot Switching Pressure</b>	See ordering information
<b>Cartridge Material</b>	All parts steel. All operating parts hardened steel.
<b>Operating Temp. Range/Seals</b>	-40°C to +93.3°C (Nitrile, Buna-N) (-40°F to +200°F) -31.7°C to +121.1°C (Fluorocarbon) (-25°F to +250°F)
<b>Fluid Compatibility/Viscosity</b>	Mineral-based or synthetic with lubricating properties at viscosities of 45 to 2000 SSU (6 to 420 cSt)
<b>Filtration</b>	ISO code 16/13, SAE Class 4 or better
<b>Approx. Weight</b>	.15 kg (.33 lbs.)
<b>Cavity</b>	C10-3 (See BC Section for more details)

**Performance Curve**

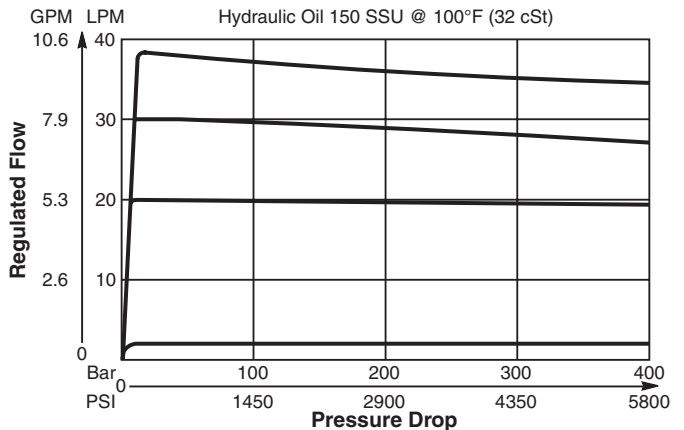
**Diverting Pressure Drop (Through cartridge only)**



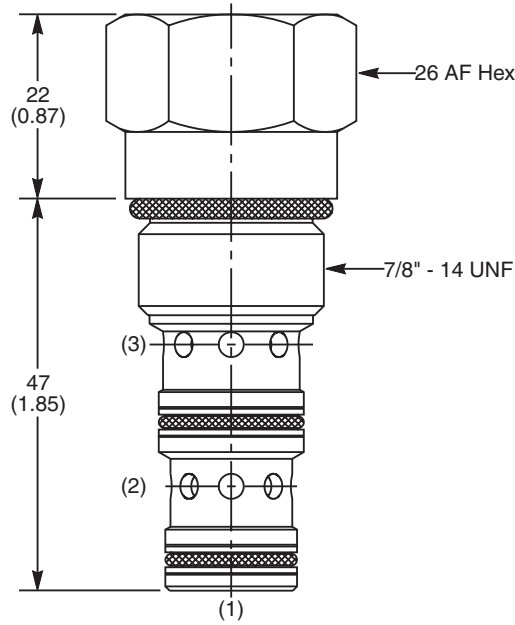
**Application**



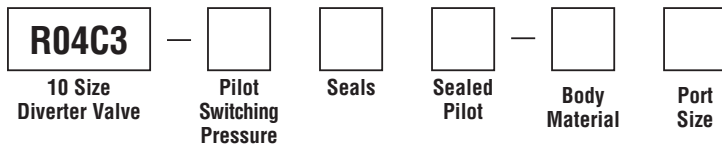
**Compensating Flow Regulation Performance 3 to 2**



**Dimensions** Millimeters (Inches)



**Ordering Information**



Code	Switching Pressure
<b>For Switching</b>	
<b>5.0</b>	5.0 Bar (73 PSI) Std.
<b>10.0</b>	10.0 Bar (145 PSI)
<b>For Flow Regulation</b>	
<b>7.7</b>	7.7 Bar (112 PSI)

*If no switching pressure is specified, valve will be supplied as R04C3-5.0N*

Code	Sealed Pilot
<b>Omit</b>	If not required
<b>S</b>	Sealed Pilot

Code	Body Material
<b>Omit</b>	Steel
<b>A</b>	Aluminum

Code	Port Size	Body Part No.
<b>Omit</b>	Cartridge Only	
<b>4P</b>	1/4" NPTF	(B10-3-*4P)
<b>6P</b>	3/8" NPTF	(B10-3-*6P)
<b>8P</b>	1/2" NPTF	(B10-3-*8P)
<b>6T</b>	SAE-6	(B10-3-*6T)
<b>8T</b>	SAE-8	(B10-3-*8T)
<b>6B</b>	3/8" BSPG	(B10-3-6B)†
<b>8B</b>	1/2" BSPG	(B10-3-*8B)

*\* Add "A" for aluminum, omit for steel.  
 † Steel bodies only.*

Code	Seals / Kit No.
<b>N</b>	Nitrile, Buna-N / (SK30505N-1)
<b>V</b>	Fluorocarbon / (SK30505V-1)

- CV** Check Valves
- SH** Shuttle Valves
- LM** Load/Motor Controls
- FC** Flow Controls
- PC** Pressure Controls
- LE** Logic Elements
- DC** Directional Controls
- MV** Manual Valves
- SV** Solenoid Valves
- PV** Proportional Valves
- CE** Coils & Electronics
- BC** Bodies & Cavities
- TD** Technical Data

**Technical Information**

- CV** Check Valves
- SH** Shuttle Valves
- LM** Load/Motor Controls
- FC** Flow Controls
- PC** Pressure Controls
- LE** Logic Elements
- DC** Directional Controls
- MV** Manual Valves
- SV** Solenoid Valves
- PV** Proportional Valves
- CE** Coils & Electronics
- BC** Bodies & Cavities
- TD** Technical Data

**General Description**

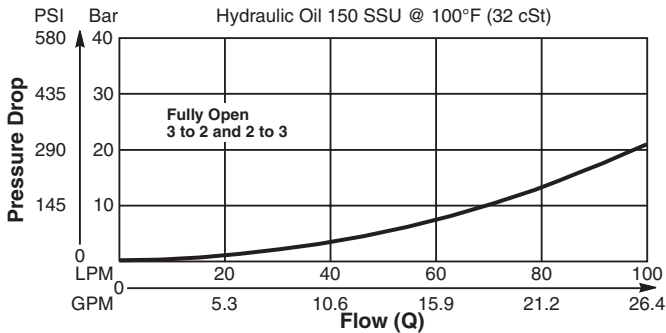
Diverter Valve, Normally Closed, Pilot to Open.

**Features**

- Two switching pressures available
- Sealed pilot option available
- Hardened working parts for maximum durability
- All external parts zinc plated

**Performance Curve**

**Pressure Drop vs. Flow (Through cartridge only)**

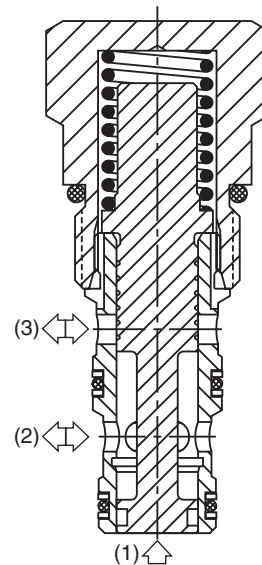
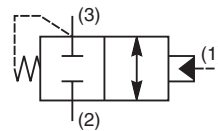


**Application Note**

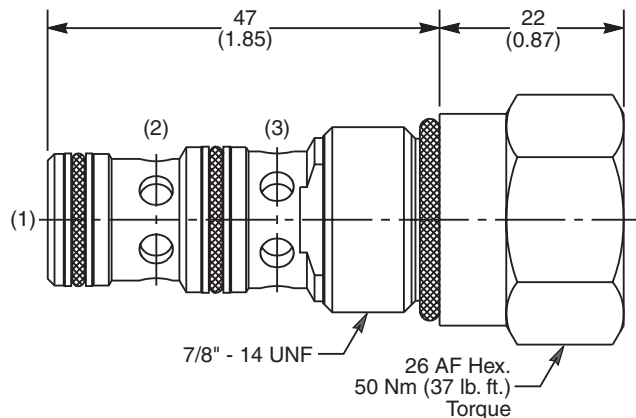
To fully open, the valve requires at least a further 2 Bar (29 PSI) above the pilot switching pressure.

**Specifications**

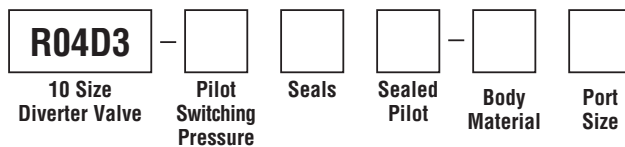
<b>Rated Flow</b>	100 LPM (22 GPM)
<b>Nominal Flow @ 7 Bar (100 PSI)</b>	60 LPM (16 GPM)
<b>Maximum Inlet Pressure</b>	420 Bar (6000 PSI)
<b>Pilot Switching Pressure</b>	See ordering information
<b>Cartridge Material</b>	All parts steel. All operating parts hardened steel.
<b>Operating Temp. Range/Seals</b>	-40°C to +93.3°C (Nitrile, Buna-N) (-40°F to +200°F) -31.7°C to +121.1°C (Fluorocarbon) (-25°F to +250°F)
<b>Fluid Compatibility/Viscosity</b>	Mineral-based or synthetic with lubricating properties at viscosities of 45 to 2000 SSU (6 to 420 cSt)
<b>Filtration</b>	ISO code 16/13, SAE Class 4 or better
<b>Approx. Weight</b>	.15 kg (.33 lbs.)
<b>Cavity</b>	C10-3 (See BC Section for more details)



**Dimensions** Millimeters (Inches)



**Ordering Information**



Code	Switching Pressure
5.0	5.0 Bar (73 PSI) Std.
10.0	10.0 Bar (145 PSI)

*If no switching pressure is specified, valve will be supplied as R04D3-5.0N*

Code	Body Material
Omit	Steel
A	Aluminum

Code	Seals / Kit No.
N	Nitrile, Buna-N / (SK30505N-1)
V	Fluorocarbon / (SK30505V-1)

Code	Sealed Pilot
Omit	If not required
S	Sealed Pilot

Code	Port Size	Body Part No.
Omit	Cartridge Only	
4P	1/4" NPTF	(B10-3-*4P)
6P	3/8" NPTF	(B10-3-*6P)
8P	1/2" NPTF	(B10-3-*8P)
6T	SAE-6	(B10-3-*6T)
8T	SAE-8	(B10-3-*8T)
6B	3/8" BSPG	(B10-3-6B)†
8B	1/2" BSPG	(B10-3-*8B)

*\* Add "A" for aluminum, omit for steel.  
† Steel bodies only.*

**General Description**

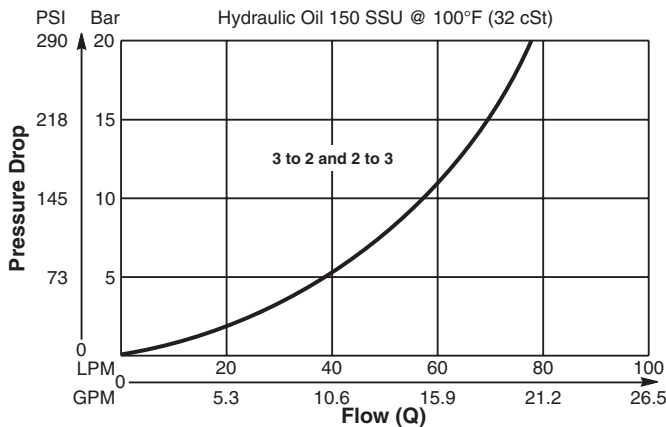
Diverter Valve, Normally Open, 2-Way with External Pilot and Vent.

**Features**

- High flow capacity
- Two switching pressures
- Sealed pilot option available
- Hardened working parts for maximum durability
- All external parts zinc plated

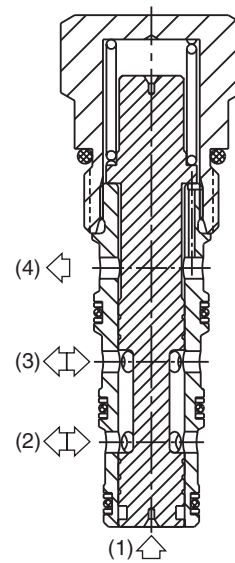
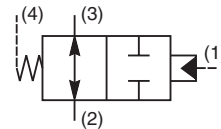
**Performance Curve**

**Pressure Drop vs. Flow (Through cartridge only)**

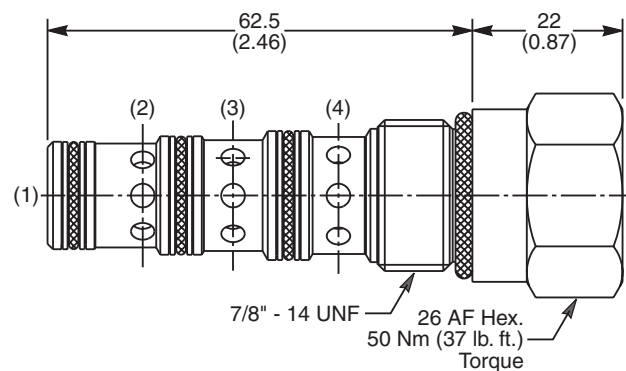


**Specifications**

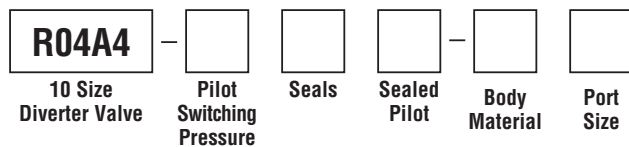
<b>Rated Flow</b>	80 LPM (21 GPM)
<b>Nominal Flow @ 7 Bar (100 PSI)</b>	47 LPM (12 GPM)
<b>Maximum Inlet Pressure</b>	420 Bar (6000 PSI)
<b>Pilot Switching Pressure</b>	See ordering information
<b>Cartridge Material</b>	All parts steel. All operating parts hardened steel.
<b>Operating Temp. Range/Seals</b>	-40°C to +93.3°C (Nitrile, Buna-N) (-40°F to +200°F) -31.7°C to +121.1°C (Fluorocarbon) (-25°F to +250°F)
<b>Fluid Compatibility/Viscosity</b>	Mineral-based or synthetic with lubricating properties at viscosities of 45 to 2000 SSU (6 to 420 cSt)
<b>Filtration</b>	ISO code 16/13, SAE Class 4 or better
<b>Approx. Weight</b>	.17 kg (.37 lbs.)
<b>Cavity</b>	C10-4 (See BC Section for more details)



**Dimensions** Millimeters (Inches)



**Ordering Information**



Code	Switching Pressure
5.0	5.0 Bar (73 PSI) Std.
10.0	10.0 Bar (145 PSI)

*If no switching pressure is specified, valve will be supplied as R04A4-5.0N*

Code	Body Material
Omit	Steel
A	Aluminum

Code	Seals / Kit No.
N	Nitrile, Buna-N / (SK30506N-1)
V	Fluorocarbon / (SK30506V-1)

Code	Port Size	Body Part No.
Omit	Cartridge Only	
6P	3/8" NPTF	(B10-4-*6P)
6T	SAE-6	(B10-4-*6T)
8T	SAE-8	(B10-4-*8T)
6B	3/8" BSPG	(B10-4-6B)†

\* Add "A" for aluminum, omit for steel.  
 † Steel bodies only

Code	Sealed Pilot
Omit	If not required
S	Sealed Pilot

- CV** Check Valves
- SH** Shuttle Valves
- LM** Load/Motor Controls
- FC** Flow Controls
- PC** Pressure Controls
- LE** Logic Elements
- DC** Directional Controls
- MV** Manual Valves
- SV** Solenoid Valves
- PV** Proportional Valves
- CE** Coils & Electronics
- BC** Bodies & Cavities
- TD** Technical Data



Technical Information

- CV Check Valves
- SH Shuttle Valves
- LM Load/Motor Controls
- FC Flow Controls
- PC Pressure Controls
- LE Logic Elements
- DC Directional Controls
- MV Manual Valves
- SV Solenoid Valves
- PV Proportional Valves
- CE Coils & Electronics
- BC Bodies & Cavities
- TD Technical Data

General Description

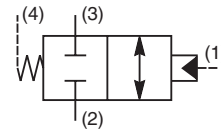
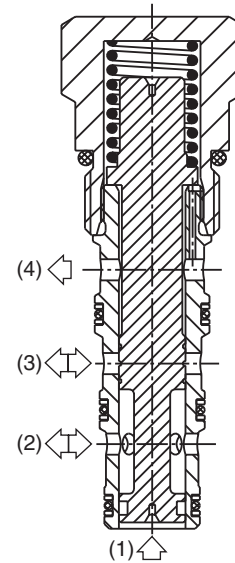
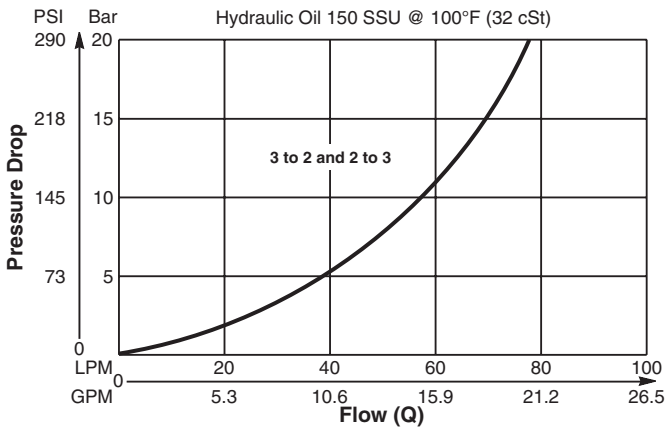
Diverter Valve, Normally Closed, 2-Way with External Pilot and Vent.

Features

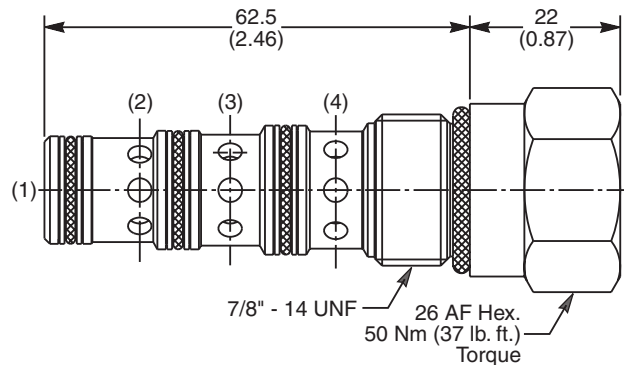
- High flow capacity
- Two switching pressures available
- Sealed pilot option available
- Hardened working parts for maximum durability
- All external parts zinc plated

Performance Curve

Pressure Drop vs. Flow (Through cartridge only)



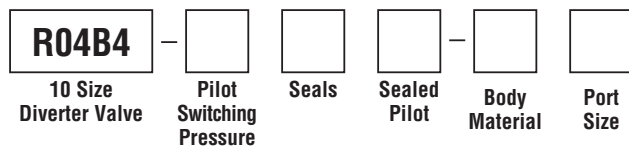
Dimensions Millimeters (Inches)



Specifications

Rated Flow	80 LPM (21 GPM)
Nominal Flow @ 7 Bar (100 PSI)	47 LPM (12 GPM)
Maximum Inlet Pressure	420 Bar (6000 PSI)
Pilot Switching Pressure	See ordering information
Cartridge Material	All parts steel. All operating parts hardened steel.
Operating Temp. Range/Seals	-40°C to +93.3°C (Nitrile, Buna-N) (-40°F to +200°F) -31.7°C to +121.1°C (Fluorocarbon) (-25°F to +250°F)
Fluid Compatibility/Viscosity	Mineral-based or synthetic with lubricating properties at viscosities of 45 to 2000 SSU (6 to 420 cSt)
Filtration	ISO code 16/13, SAE Class 4 or better
Approx. Weight	.17 kg (.37 lbs.)
Cavity	C10-4 (See BC Section for more details)

Ordering Information



Code	Switching Pressure
5.0	5.0 Bar (73 PSI) Std.
10.0	10.0 Bar (145 PSI)

Code	Body Material
Omit	Steel
A	Aluminum

If no switching pressure is specified, valve will be supplied as R04B4-5.0N

Code	Seals / Kit No.
N	Nitrile, Buna-N / (SK30506N-1)
V	Fluorocarbon / (SK30506V-1)

Code	Port Size	Body Part No.
Omit	Cartridge Only	
6P	3/8" NTPF	(B10-4-*6P)
6T	SAE-6	(B10-4-*6T)
8T	SAE-8	(B10-4-*8T)
6B	3/8" BSPG	(B10-4-6B)†

\* Add "A" for aluminum, omit for steel. † Steel bodies only

Code	Sealed Pilot
Omit	If not required
S	Sealed Pilot





**Technical Information**

**CV** Check Valves  
**SH** Shuttle Valves  
**LM** Load/Motor Controls  
**FC** Flow Controls  
**PC** Pressure Controls  
**LE** Logic Elements  
**DC** Directional Controls  
**MV** Manual Valves  
**SV** Solenoid Valves  
**PV** Proportional Valves  
**CE** Coils & Electronics  
**BC** Bodies & Cavities  
**TD** Technical Data

**General Description**

3-Way Pilot Operated Spool Valve. The DH103A/B/C Series Valves are used in normally closed or normally open directional control three way circuits requiring remote pilot actuation. The DH103-D/E Series Valves are used to direct flow alternately from either side of a closed loop transmission for cooling or filtering. All external parts are zinc plated.

**Operation**

**DH103A (Normally Open)**

- Neutral (Deactivated)  
Port (3) open to port (2), inlet port (4) is blocked.
  - Activated with pilot pressure at port (1):  
Port (4) open to port (3), port (2) blocked.
- Note: There is an air breather vent plug in the end cap to allow for air pressure equalization in the spring chamber

**DH103B (Normally Closed)**

- Neutral (Deactivated)  
Port (4) open to port (3), inlet port (2) is blocked.
- Activated with pilot pressure at port (1):  
Port (3) open to port (2), port (4) blocked.

**DH103C (Normally Open)**

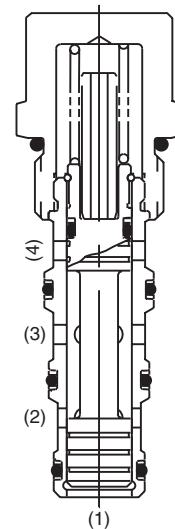
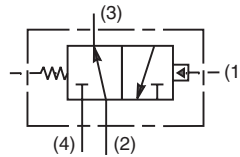
- Neutral (Deactivated)  
Port (3) open to port (2), inlet port (4) is blocked.
- Activated with pilot pressure at port (1):  
Port (4) open to port (3), port (2) blocked.

**Specifications**

<b>Nominal Flow</b>	38 LPM (10 GPM)
<b>Maximum Inlet Pressure</b>	240 Bar (3500 PSI)
<b>Leakage at 150 SSU (32 cSt)</b>	50 cc/min. at 240 Bar (3500 PSI)
<b>Cartridge Material</b>	All parts steel. All operating parts hardened steel.
<b>Operating Temp. Range/Seals</b>	-40°C to +93.3°C (Nitrile) (-40°F to +200°F) -31.7°C to +121.1°C (Fluorocarbon) (-25°F to +250°F)
<b>Fluid Compatibility/ Viscosity</b>	Mineral-based or synthetic with lubricating properties at viscosities of 45 to 2000 SSU (6 to 420 cSt)
<b>Filtration</b>	ISO code 16/13, SAE Class 4 or better
<b>Approx. Weight</b>	0.23 kg (0.5 lbs.)
<b>Cavity</b>	C10-4 (See BC Section for more details)
<b>Form Tool</b>	Rougher NFT10-4R Finisher NFT10-4F

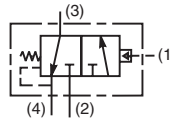
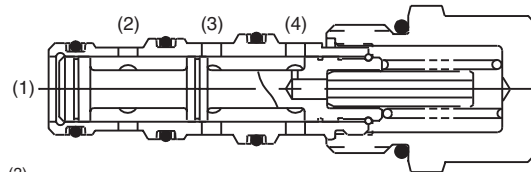


"A" SPOOL – DH103A

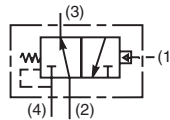
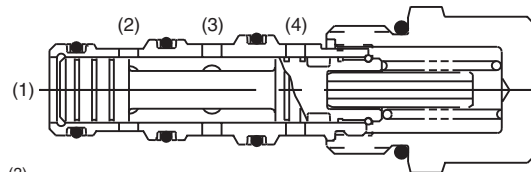


"A" SPOOL — DH103A

"B" SPOOL — DH103B

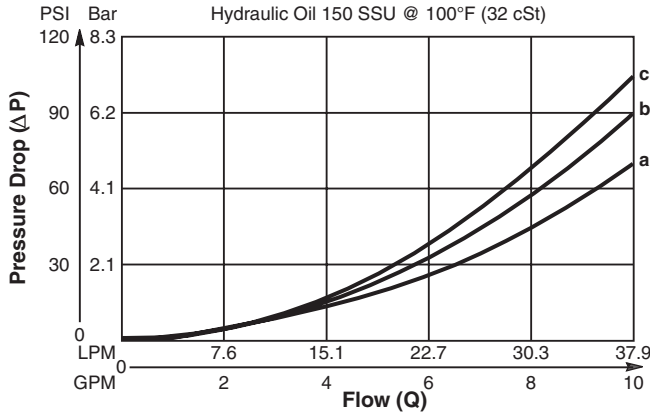


"C" SPOOL — DH103C



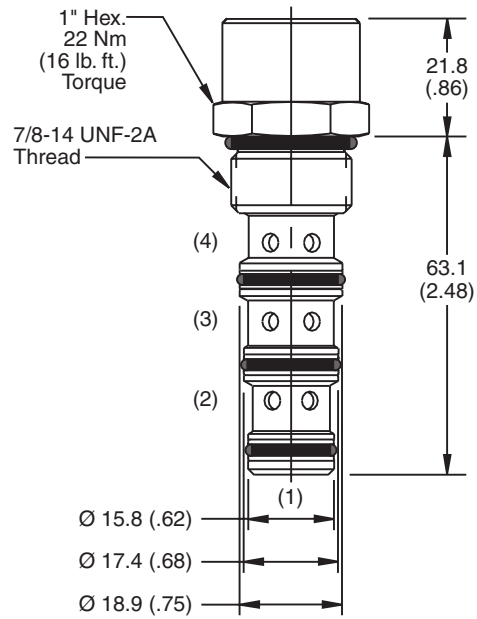
**Performance Curve**

**Flow vs. Pressure Drop (Through cartridge only)**



FLOW DIRECTION	SPOOL NO.		
	A	B	C
SPOOL SHIFTED	3 → 4 c	2 → 3 d	3 → 4 c
SPOOL NEUTRAL	2 → 3 a	3 → 4 b	2 → 3 a

**Dimensions** Millimeters (Inches)



**Ordering Information**

**DH103**             —    

**10 Size Pilot Operated Spool Valve**    **Spool Type**    **Pressure Differential**    **Seals**    **Body Material**    **Port Size**

Code / Spool Type	Diagram
<b>A</b> Normally open 2 position, vent to atmosphere.	
<b>B</b> Normally closed 2 position, internally drain.	
<b>C</b> Normally open, 2 position, internally drain.	

Code	Pressure Differential
Omit	5.5 Bar (80 PSI)
<b>04</b>	2.8 Bar (40 PSI)
<b>16</b>	11 Bar (160 PSI)

Code	Seals / Kit. No.
Omit	Nitrile / (SK10-4N)
<b>V</b>	Fluorocarbon / (SK10-4V)

Code	Body Material
Omit	Steel
<b>A</b>	Aluminum

Code	Port Size	Body Part No.
Omit	Cartridge Only	
<b>4P</b>	1/4" NPTF	(B10-4-*4P)
<b>6P</b>	3/8" NPTF	(B10-4-*6P)
<b>8P</b>	1/2" NPTF	(B10-4-*6P)
<b>6T</b>	SAE - 6	(B10-4-*6T)
<b>8T</b>	SAE - 8	(B10-4-*8T)
<b>6B</b>	3/8" BSPG	(B10-4-6B)†
<b>8B</b>	1/2" BSPG	(B10-4-*8B)

\* Add "A" for aluminum, omit for steel.  
 † Steel body only.

- CV** Check Valves
- SH** Shuttle Valves
- LM** Load/Motor Controls
- FC** Flow Controls
- PC** Pressure Controls
- LE** Logic Elements
- DC** Directional Controls
- MV** Manual Valves
- SV** Solenoid Valves
- PV** Proportional Valves
- CE** Coils & Electronics
- BC** Bodies & Cavities
- TD** Technical Data

**Technical Information**

- CV** Check Valves
- SH** Shuttle Valves
- LM** Load/Motor Controls
- FC** Flow Controls
- PC** Pressure Controls
- LE** Logic Elements
- DC** Directional Controls
- MV** Manual Valves
- SV** Solenoid Valves
- PV** Proportional Valves
- CE** Coils & Electronics
- BC** Bodies & Cavities
- TD** Technical Data

**General Description**

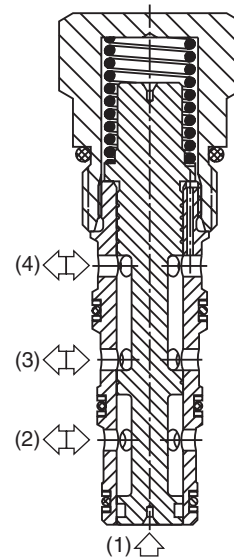
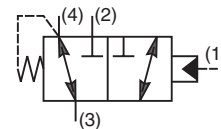
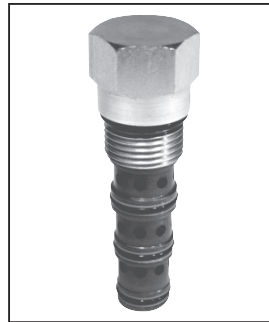
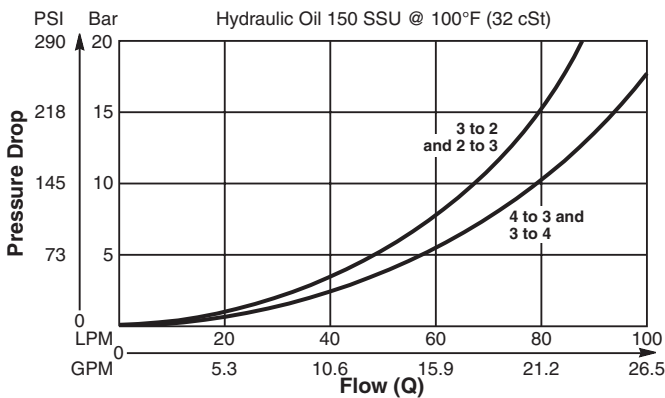
Pilot Operated Directional Valve, 3-Way External Pilot, Internal Vent.

**Features**

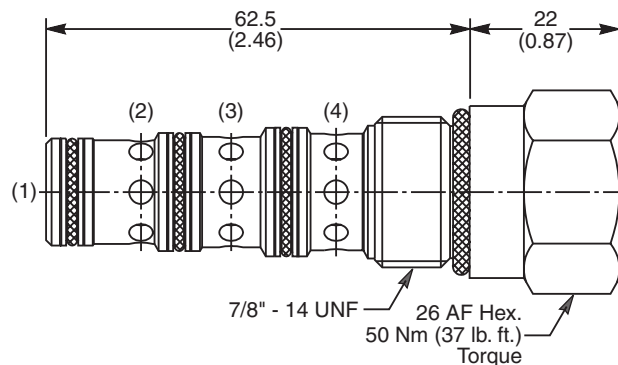
- High flow capacity
- Two switching pressures available
- Sealed pilot option available
- Hardened working parts for maximum durability
- All external parts zinc plated

**Performance Curve**

Pressure Drop vs. Flow (Through cartridge only)



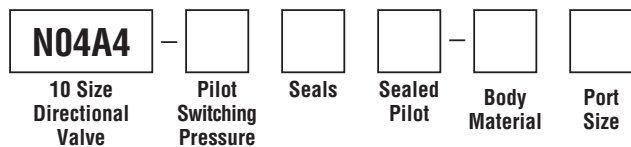
**Dimensions** Millimeters (Inches)



**Specifications**

<b>Rated Flow</b>	90 LPM (24 GPM)
<b>Nominal Flow @ 7 Bar (100 PSI)</b>	50 LPM (13 GPM)
<b>Maximum Inlet Pressure</b>	420 Bar (6000 PSI)
<b>Pilot Switching Pressure</b>	See ordering information
<b>Cartridge Material</b>	All parts steel. All operating parts hardened steel.
<b>Operating Temp. Range/Seals</b>	-40°C to +93.3°C (Nitrile, Buna-N) (-40°F to +200°F) -31.7°C to +121.1°C (Fluorocarbon) (-25°F to +250°F)
<b>Fluid Compatibility/Viscosity</b>	Mineral-based or synthetic with lubricating properties at viscosities of 45 to 2000 SSU (6 to 420 cSt)
<b>Filtration</b>	ISO code 16/13, SAE Class 4 or better
<b>Approx. Weight</b>	.17 kg (.37 lbs.)
<b>Cavity</b>	C10-4 (See BC Section for more details)

**Ordering Information**



Code	Switching Pressure
5.0	5.0 Bar (73 PSI) Std.
10.0	10.0 Bar (145 PSI)

Code	Body Material
Omit	Steel
A	Aluminum

*If no switching pressure is specified, valve will be supplied as N04A4-5.0N*

Code	Seals / Kit No.
N	Nitrile, Buna-N / (SK30506N-1)
V	Fluorocarbon / (SK30506V-1)

Code	Port Size	Body Part No.
Omit	<b>Cartridge Only</b>	
6P	3/8" NTPF	(B10-4-*6P)
6T	SAE-6	(B10-4-*6T)
8T	SAE-8	(B10-4-*8T)
6B	3/8" BSPG	(B10-4-6B)†

\* Add "A" for aluminum, omit for steel.  
† Steel bodies only

Code	Sealed Pilot
Omit	If not required
S	Sealed Pilot



**General Description**

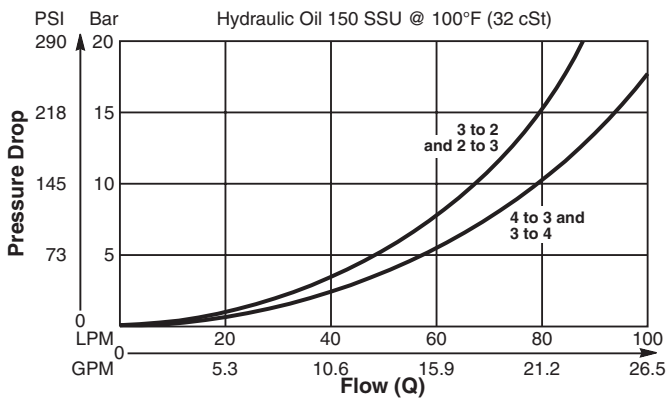
Pilot Operated Directional Valve, 3-Way External Pilot, Internal Vent.

**Features**

- High flow capacity
- Two switching pressures available
- Sealed pilot option available
- Hardened working parts for maximum durability
- All external parts zinc plated

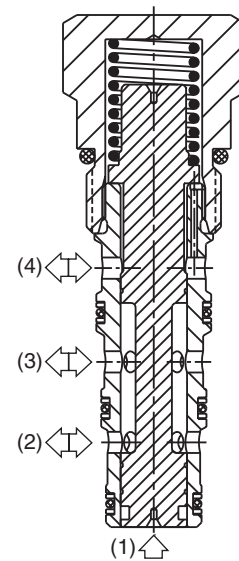
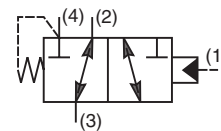
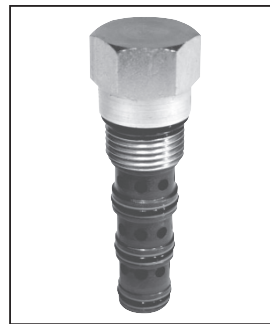
**Performance Curve**

**Pressure Drop vs. Flow (Through cartridge only)**

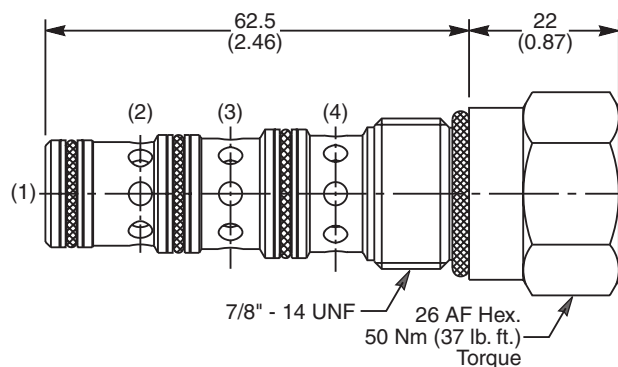


**Specifications**

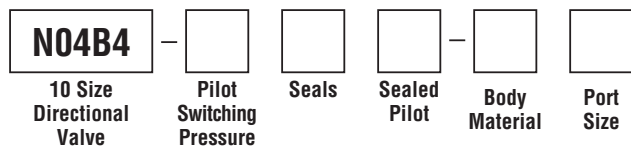
<b>Rated Flow</b>	90 LPM (24 GPM)
<b>Nominal Flow @ 7 Bar (100 PSI)</b>	50 LPM (13 GPM)
<b>Maximum Inlet Pressure</b>	420 Bar (6000 PSI)
<b>Pilot Switching Pressure</b>	See ordering information
<b>Cartridge Material</b>	All parts steel. All operating parts hardened steel.
<b>Operating Temp. Range/Seals</b>	-40°C to +93.3°C (Nitrile, Buna-N) (-40°F to +200°F) -31.7°C to +121.1°C (Fluorocarbon) (-25°F to +250°F)
<b>Fluid Compatibility/Viscosity</b>	Mineral-based or synthetic with lubricating properties at viscosities of 45 to 2000 SSU (6 to 420 cSt)
<b>Filtration</b>	ISO code 16/13, SAE Class 4 or better
<b>Approx. Weight</b>	.17 kg (.37 lbs.)
<b>Cavity</b>	C10-4 (See BC Section for more details)



**Dimensions** Millimeters (Inches)



**Ordering Information**



Code	Switching Pressure
5.0	5.0 Bar (73 PSI) Std.
10.0	10.0 Bar (145 PSI)

*If no switching pressure is specified, valve will be supplied as N04B4-5.0N*

Code	Body Material
Omit	Steel
A	Aluminum

Code	Seals / Kit No.
N	Nitrile, Buna-N / (SK30506N-1)
V	Fluorocarbon / (SK30506V-1)

Code	Port Size	Body Part No.
Omit	<b>Cartridge Only</b>	
6P	3/8" NTPF	(B10-4-*6P)
6T	SAE-6	(B10-4-*6T)
8T	SAE-8	(B10-4-*8T)
6B	3/8" BSPG	(B10-4-6B)†

\* Add "A" for aluminum, omit for steel.  
 † Steel bodies only

Code	Sealed Pilot
Omit	If not required
S	Sealed Pilot

**CV** Check Valves

**SH** Shuttle Valves

**LM** Load/Motor Controls

**FC** Flow Controls

**PC** Pressure Controls

**LE** Logic Elements

**DC** Directional Controls

**MV** Manual Valves

**SV** Solenoid Valves

**PV** Proportional Valves

**CE** Coils & Electronics

**BC** Bodies & Cavities

**TD** Technical Data

**Technical Information**

- CV** Check Valves
- SH** Shuttle Valves
- LM** Load/Motor Controls
- FC** Flow Controls
- PC** Pressure Controls
- LE** Logic Elements
- DC** Directional Controls
- MV** Manual Valves
- SV** Solenoid Valves
- PV** Proportional Valves
- CE** Coils & Electronics
- BC** Bodies & Cavities
- TD** Technical Data

**General Description**

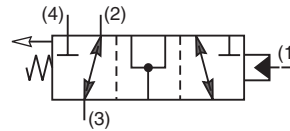
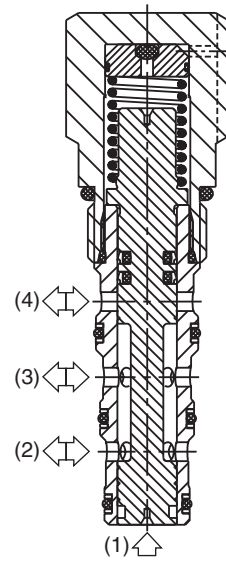
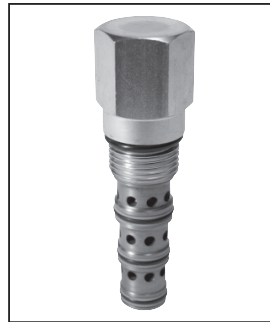
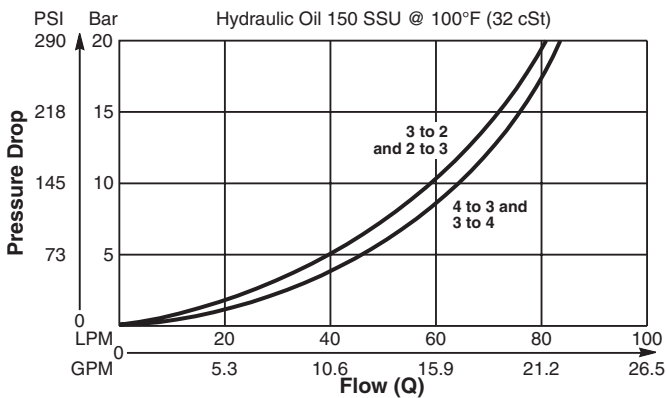
Pilot Operated Directional Valve, 3-Way External Pilot Vented to Atmosphere. Open Transition Feature.

**Features**

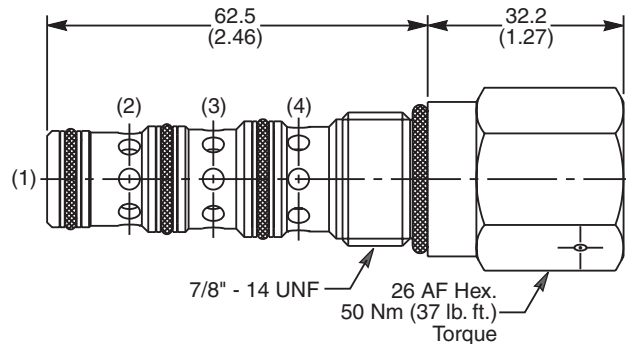
- High flow capacity
- Two switching pressures available
- Sealed pilot option available
- Hardened working parts for maximum durability
- All external parts zinc plated

**Performance Curve**

**Pressure Drop vs. Flow (Through cartridge only)**



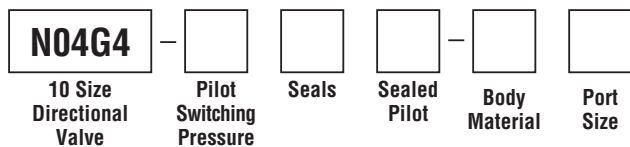
**Dimensions** Millimeters (Inches)



**Specifications**

<b>Rated Flow</b>	85 LPM (22.5 GPM)
<b>Nominal Flow @ 7 Bar (100 PSI)</b>	50 LPM (13 GPM)
<b>Maximum Inlet Pressure</b>	420 Bar (6000 PSI)
<b>Pilot Switching Pressure</b>	See ordering information
<b>Cartridge Material</b>	All parts steel. All operating parts hardened steel.
<b>Operating Temp. Range/Seals</b>	-40°C to +93.3°C (Nitrile, Buna-N) (-40°F to +200°F) -31.7°C to +121.1°C (Fluorocarbon) (-25°F to +250°F)
<b>Fluid Compatibility/Viscosity</b>	Mineral-based or synthetic with lubricating properties at viscosities of 45 to 2000 SSU (6 to 420 cSt)
<b>Filtration</b>	ISO code 16/13, SAE Class 4 or better
<b>Approx. Weight</b>	.22 kg (.48 lbs.)
<b>Cavity</b>	C10-4 (See BC Section for more details)

**Ordering Information**



Code	Switching Pressure
10.0	10.0 Bar (145 PSI) Std.
15.0	15.0 Bar (218 PSI)

*If no switching pressure is specified, valve will be supplied as N04G4-10.0N*

Code	Seals / Kit No.
N	Nitrile, Buna-N / (SK30506N-1)
V	Fluorocarbon / (SK30506V-1)

Code	Sealed Pilot
Omit	If not required
S	Sealed Pilot

Code	Body Material
Omit	Steel
A	Aluminum

Code	Port Size	Body Part No.
Omit	<b>Cartridge Only</b>	
6P	3/8" NTPF	(B10-4-*6P)
6T	SAE-6	(B10-4-*6T)
8T	SAE-8	(B10-4-*8T)
6B	3/8" BSPG	(B10-4-6B)†

\* Add "A" for aluminum, omit for steel.  
† Steel bodies only



**General Description**

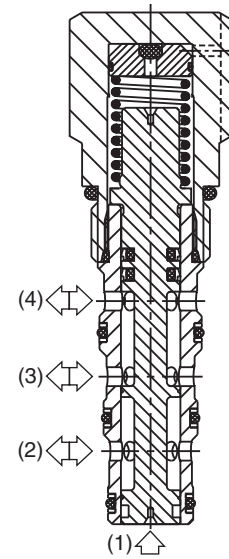
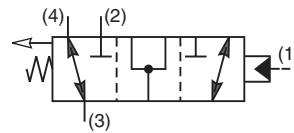
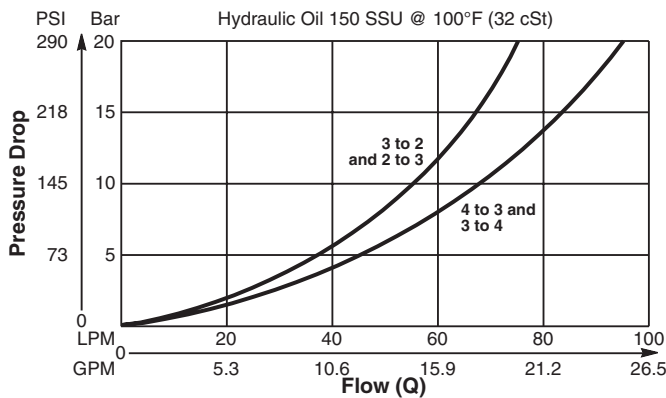
Pilot Operated Directional Valve, 3-Way External Pilot Vented to Atmosphere. Open Transition Feature.

**Features**

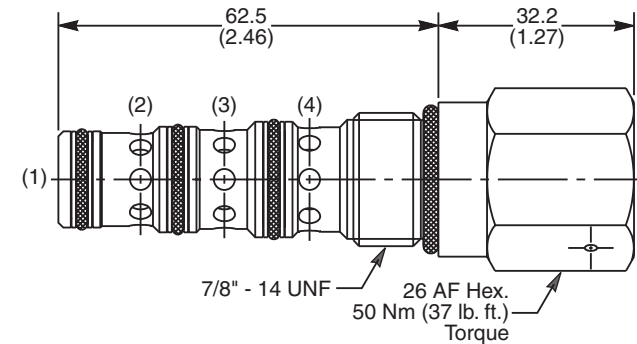
- High flow capacity
- Two switching pressures available
- Sealed pilot option available
- Hardened working parts for maximum durability
- All external parts zinc plated

**Performance Curve**

**Pressure Drop vs. Flow (Through cartridge only)**



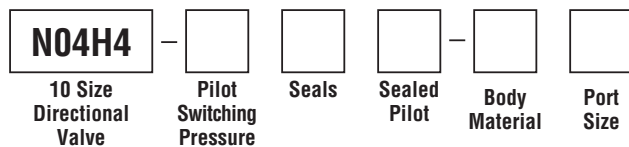
**Dimensions** Millimeters (Inches)



**Specifications**

<b>Rated Flow</b>	85 LPM (22.5 GPM)
<b>Nominal Flow @ 7 Bar (100 PSI)</b>	50 LPM (13 GPM)
<b>Maximum Inlet Pressure</b>	420 Bar (6000 PSI)
<b>Pilot Switching Pressure</b>	See ordering information
<b>Cartridge Material</b>	All parts steel. All operating parts hardened steel.
<b>Operating Temp. Range/Seals</b>	-40°C to +93.3°C (Nitrile, Buna-N) (-40°F to +200°F) -31.7°C to +121.1°C (Fluorocarbon) (-25°F to +250°F)
<b>Fluid Compatibility/Viscosity</b>	Mineral-based or synthetic with lubricating properties at viscosities of 45 to 2000 SSU (6 to 420 cSt)
<b>Filtration</b>	ISO code 16/13, SAE Class 4 or better
<b>Approx. Weight</b>	.22 kg (.48 lbs.)
<b>Cavity</b>	C10-4 (See BC Section for more details)

**Ordering Information**



Code	Switching Pressure
10.0	10.0 Bar (145 PSI) Std.
15.0	15.0 Bar (218 PSI)

*If no switching pressure is specified, valve will be supplied as N04H4-10.0N*

Code	Seals / Kit No.
N	Nitrile, Buna-N / (SK30506N-1)
V	Fluorocarbon / (SK30506V-1)

Code	Sealed Pilot
Omit	If not required
S	Sealed Pilot

Code	Body Material
Omit	Steel
A	Aluminum

Code	Port Size	Body Part No.
Omit	<b>Cartridge Only</b>	
6P	3/8" NTPF	(B10-4-*6P)
6T	SAE-6	(B10-4-*6T)
8T	SAE-8	(B10-4-*8T)
6B	3/8" BSPG	(B10-4-6B)†

\* Add "A" for aluminum, omit for steel.  
 † Steel bodies only

**Technical Information**

- CV** Check Valves
- SH** Shuttle Valves
- LM** Load/Motor Controls
- FC** Flow Controls
- PC** Pressure Controls
- LE** Logic Elements
- DC** Directional Controls
- MV** Manual Valves
- SV** Solenoid Valves
- PV** Proportional Valves
- CE** Coils & Electronics
- BC** Bodies & Cavities
- TD** Technical Data

**General Description**

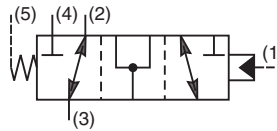
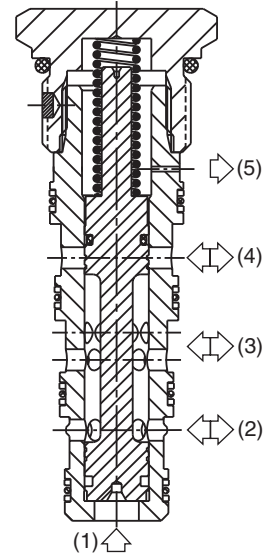
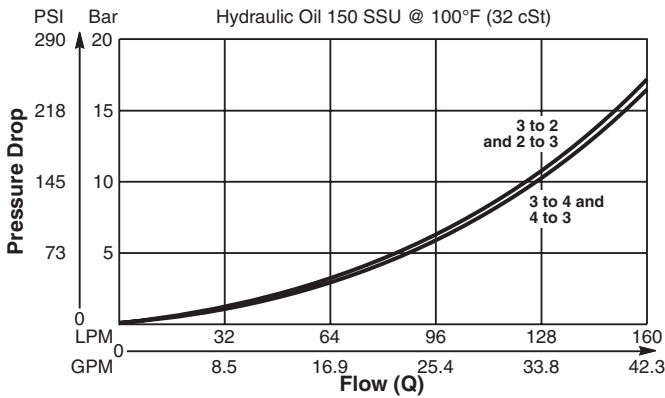
Pilot Operated Directional Valve, 3-Way, 2 Position, External Drain, Open Transition.

**Features**

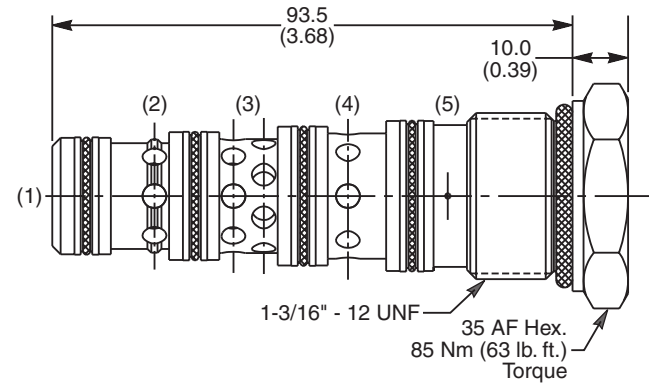
- High flow capacity
- Used as high flow switching or metering element
- Range of spring settings available
- All external parts zinc plated

**Performance Curve**

**Pressure Drop vs. Flow (Through cartridge only)**



**Dimensions** Millimeters (Inches)



**Specifications**

<b>Rated Flow</b>	160 LPM (42.3 GPM)
<b>Nominal Flow @ 7 Bar (100 PSI)</b>	90 LPM (24 GPM)
<b>Maximum Inlet Pressure</b>	420 Bar (6000 PSI)
<b>Pilot Switching Pressure</b>	See ordering information
<b>Cartridge Material</b>	Steel operating parts, hardened steel spool.
<b>Operating Temp. Range/Seals</b>	-40°C to +93.3°C (Nitrile, Buna-N) (-40°F to +200°F) -31.7°C to +121.1°C (Fluorocarbon) (-25°F to +250°F)
<b>Fluid Compatibility/Viscosity</b>	Mineral-based or synthetic with lubricating properties at viscosities of 45 to 2000 SSU (6 to 420 cSt)
<b>Filtration</b>	ISO code 16/13, SAE Class 4 or better
<b>Approx. Weight</b>	.33 kg (.76 lbs.)
<b>Cavity</b>	5A (See BC Section for more details)

**Ordering Information**

**N5A125** —     
 Directional Valve (All Ports Open)    Pilot Switching Pressure    Seals

Code	Switching Pressure
0.0	0.0 Bar (0 PSI)
5.0	5.0 Bar (73 PSI)
6.9	6.9 Bar (100 PSI) Std.
10.0	10.0 Bar (145 PSI)
15.0	15.0 Bar (217 PSI)

*If no switching pressure is specified, valve will be supplied as N5A125-6.9N*

Code	Seals / Kit No.
N	Nitrile, Buna-N / (SK30103N-1)
V	Fluorocarbon / (SK30103V-1)

**Order Bodies Separately**

**LB10**     
 Line Body    Porting    Body Material

Code	Porting
314	3/4" BSP (main) 1/4" BSP (aux)
321	3/4" SAE (main) 1/4" SAE (aux)

Code	Body Material
A	Aluminum
S	Steel



**General Description**

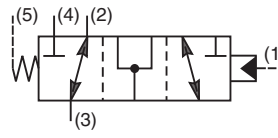
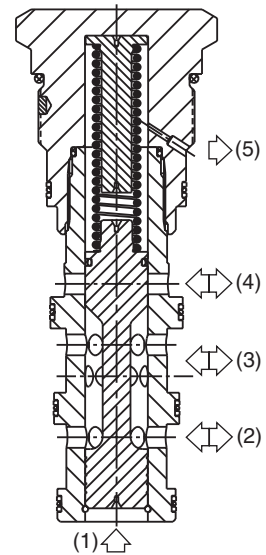
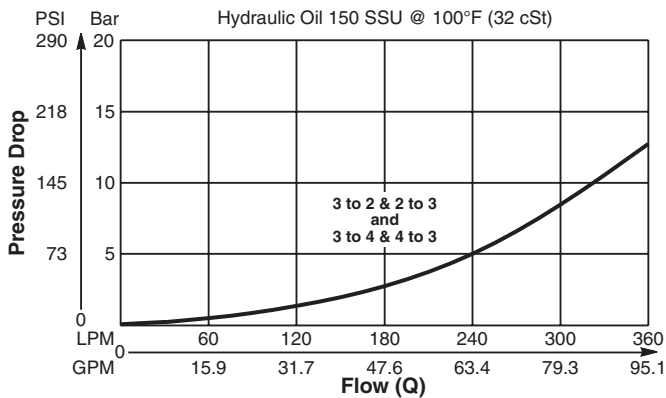
Pilot Operated Directional Valve, 3-Way, 2 Position, External Drain, Open Transition.

**Features**

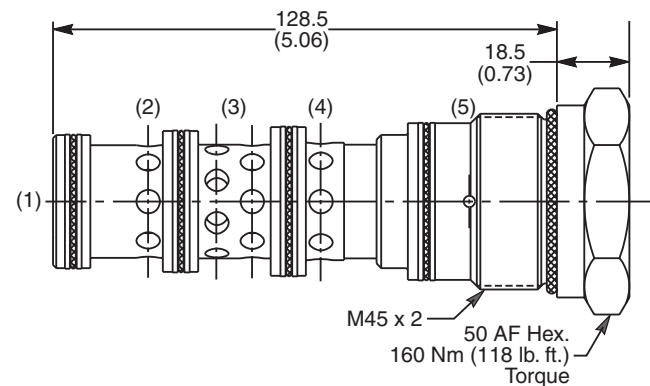
- High flow capacity
- Used as high flow switching or metering element
- Range of spring settings available
- All external parts zinc plated

**Performance Curve**

**Pressure Drop vs. Flow (Through cartridge only)**



**Dimensions** Millimeters (Inches)



**Specifications**

<b>Rated Flow</b>	400 LPM (105 GPM)
<b>Nominal Flow @ 7 Bar (100 PSI)</b>	270 LPM (71 GPM)
<b>Maximum Inlet Pressure</b>	420 Bar (6000 PSI)
<b>Pilot Switching Pressure</b>	See ordering information
<b>Cartridge Material</b>	Steel operating parts, hardened steel spool.
<b>Operating Temp. Range/Seals</b>	-40°C to +93.3°C (Nitrile, Buna-N) (-40°F to +200°F) -31.7°C to +121.1°C (Fluorocarbon) (-25°F to +250°F)
<b>Fluid Compatibility/Viscosity</b>	Mineral-based or synthetic with lubricating properties at viscosities of 45 to 2000 SSU (6 to 420 cSt)
<b>Filtration</b>	ISO code 16/13, SAE Class 4 or better
<b>Approx. Weight</b>	1.00 kg (2.2 lbs.)
<b>Cavity</b>	100-1 (See BC Section for more details)

**Ordering Information**

**N5A300** —     
 Directional Valve (All Ports Open)    Pilot Switching Pressure    Seals

Code	Switching Pressure
3.0	3.0 Bar (44 PSI)
6.9	6.9 Bar (100 PSI) Std.
10.0	10.0 Bar (145 PSI)

*If no switching pressure is specified, valve will be supplied as N5A300-6.9N*

Code	Seals / Kit No.
N	Nitrile, Buna-N / (SK30065N-1)
V	Fluorocarbon / (SK30065V-1)

**Order Bodies Separately**

**LB10**     
 Line Body    Porting    Body Material

Code	Porting
316	1-1/4" BSP (main) 3/8" BSP (aux)
317	1-1/4" SAE (main) 3/8" SAE (aux)

Code	Body Material
A	Aluminum
S	Steel

**CV** Check Valves

**SH** Shuttle Valves

**LM** Load/Motor Controls

**FC** Flow Controls

**PC** Pressure Controls

**LE** Logic Elements

**DC** Directional Controls

**MV** Manual Valves

**SV** Solenoid Valves

**PV** Proportional Valves

**CE** Coils & Electronics

**BC** Bodies & Cavities

**TD** Technical Data

**Technical Information**

- CV** Check Valves
- SH** Shuttle Valves
- LM** Load/Motor Controls
- FC** Flow Controls
- PC** Pressure Controls
- LE** Logic Elements
- DC** Directional Controls
- MV** Manual Valves
- SV** Solenoid Valves
- PV** Proportional Valves
- CE** Coils & Electronics
- BC** Bodies & Cavities
- TD** Technical Data

**General Description**

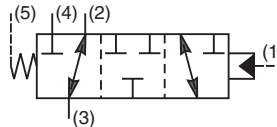
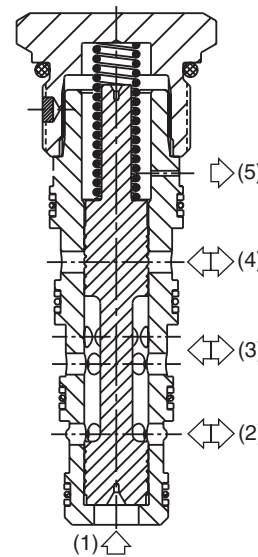
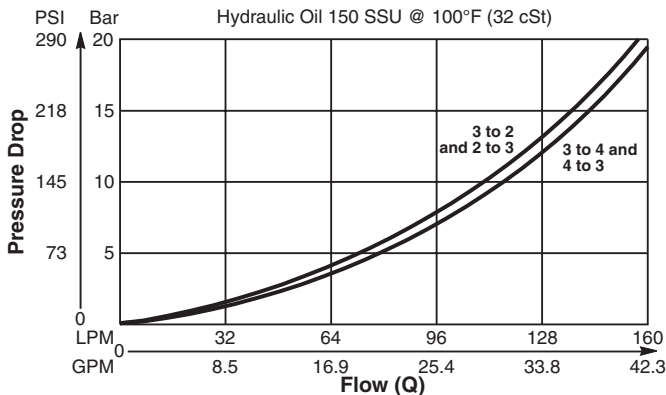
Pilot Operated Directional Valve, 3-Way, 2 Position, External Drain, Closed Transition.

**Features**

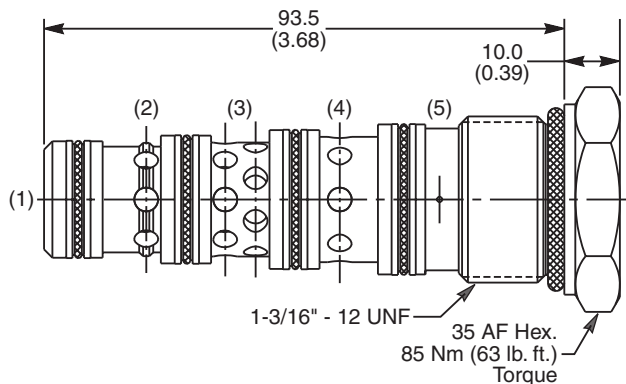
- High flow capacity
- Used as high flow switching or metering element
- Range of spring settings available
- All external parts zinc plated

**Performance Curve**

**Pressure Drop vs. Flow (Through cartridge only)**



**Dimensions** Millimeters (Inches)



**Specifications**

<b>Rated Flow</b>	160 LPM (42.3 GPM)
<b>Nominal Flow @ 7 Bar (100 PSI)</b>	90 LPM (24 GPM)
<b>Maximum Inlet Pressure</b>	420 Bar (6000 PSI)
<b>Pilot Switching Pressure</b>	See ordering information
<b>Cartridge Material</b>	Steel operating parts, hardened steel spool.
<b>Operating Temp. Range/Seals</b>	-40°C to +93.3°C (Nitrile, Buna-N) (-40°F to +200°F) -31.7°C to +121.1°C (Fluorocarbon) (-25°F to +250°F)
<b>Fluid Compatibility/Viscosity</b>	Mineral-based or synthetic with lubricating properties at viscosities of 45 to 2000 SSU (6 to 420 cSt)
<b>Filtration</b>	ISO code 16/13, SAE Class 4 or better
<b>Approx. Weight</b>	.33 kg (.76 lbs.)
<b>Cavity</b>	5A (See BC Section for more details)

**Ordering Information**

**N5B125** —  Directional Valve (All Ports Closed)     Pilot Switching Pressure     Seals

Code	Switching Pressure
0.0	0.0 Bar (0 PSI)
5.0	5.0 Bar (73 PSI)
6.9	6.9 Bar (100 PSI) Std.
10.0	10.0 Bar (145 PSI)
15.0	15.0 Bar (217 PSI)

*If no switching pressure is specified, valve will be supplied as N5B125-6.9N*

Code	Seals / Kit No.
N	Nitrile, Buna-N / (SK30103N-1)
V	Fluorocarbon / (SK30103V-1)

**Order Bodies Separately**

**LB10**  Line Body     Porting     Body Material

Code	Porting
314	3/4" BSP (main) 1/4" BSP (aux)
321	3/4" SAE (main) 1/4" SAE (aux)

Code	Body Material
A	Aluminum
S	Steel



**General Description**

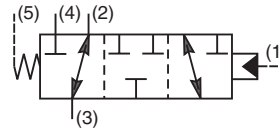
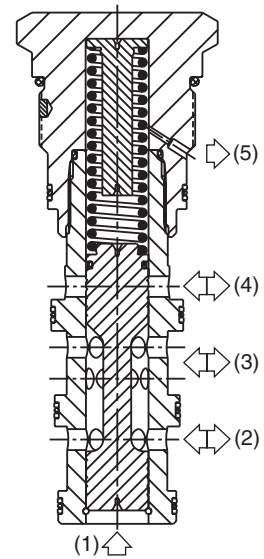
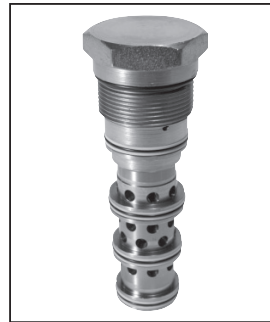
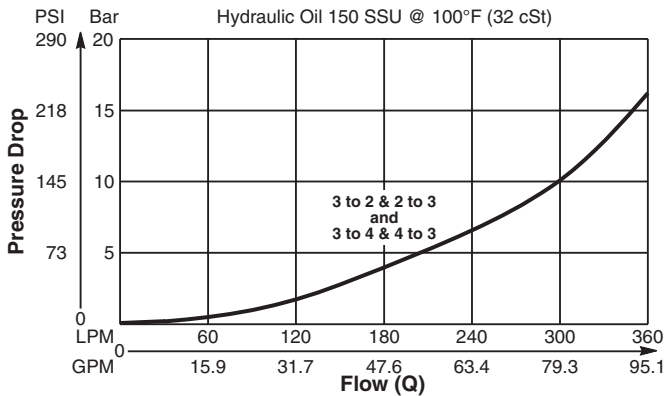
Pilot Operated Directional Valve, 3-Way, 2 Position, External Drain, Closed Transition.

**Features**

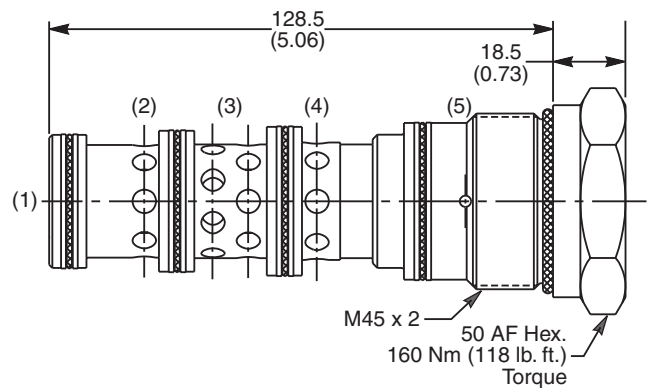
- High flow capacity
- Used as high flow switching or metering element
- Range of spring settings available
- All external parts zinc plated

**Performance Curve**

**Pressure Drop vs. Flow (Through cartridge only)**



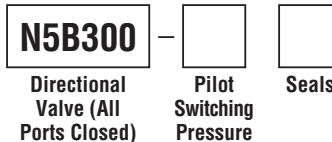
**Dimensions** Millimeters (Inches)



**Specifications**

<b>Rated Flow</b>	400 LPM (105 GPM)
<b>Nominal Flow @ 7 Bar (100 PSI)</b>	270 LPM (71 GPM)
<b>Maximum Inlet Pressure</b>	420 Bar (6000 PSI)
<b>Pilot Switching Pressure</b>	See ordering information
<b>Cartridge Material</b>	Steel operating parts, hardened steel spool.
<b>Operating Temp. Range/Seals</b>	-40°C to +93.3°C (Nitrile, Buna-N) (-40°F to +200°F) -31.7°C to +121.1°C (Fluorocarbon) (-25°F to +250°F)
<b>Fluid Compatibility/Viscosity</b>	Mineral-based or synthetic with lubricating properties at viscosities of 45 to 2000 SSU (6 to 420 cSt)
<b>Filtration</b>	ISO code 16/13, SAE Class 4 or better
<b>Approx. Weight</b>	1.00 kg (2.2 lbs.)
<b>Cavity</b>	100-1 (See BC Section for more details)

**Ordering Information**



Code	Switching Pressure
3.0	3.0 Bar (44 PSI)
6.9	6.9 Bar (100 PSI) Std.
10.0	10.0 Bar (145 PSI)

*If no switching pressure is specified, valve will be supplied as N5B300-6.9N*

Code	Seals / Kit No.
N	Nitrile, Buna-N / (SK30065N-1)
V	Fluorocarbon / (SK30065V-1)

**Order Bodies Separately**



Code	Porting
316	1-1/4" BSP (main) 3/8" BSP (aux)
317	1-1/4" SAE (main) 3/8" SAE (aux)

Code	Body Material
A	Aluminum
S	Steel

- CV** Check Valves
- SH** Shuttle Valves
- LM** Load/Motor Controls
- FC** Flow Controls
- PC** Pressure Controls
- LE** Logic Elements
- DC** Directional Controls
- MV** Manual Valves
- SV** Solenoid Valves
- PV** Proportional Valves
- CE** Coils & Electronics
- BC** Bodies & Cavities
- TD** Technical Data

**Technical Information**

- CV** Check Valves
- SH** Shuttle Valves
- LM** Load/Motor Controls
- FC** Flow Controls
- PC** Pressure Controls
- LE** Logic Elements
- DC** Directional Controls
- MV** Manual Valves
- SV** Solenoid Valves
- PV** Proportional Valves
- CE** Coils & Electronics
- BC** Bodies & Cavities
- TD** Technical Data

**General Description**

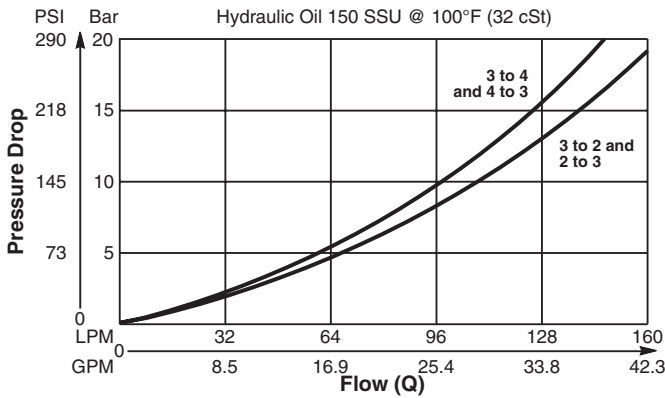
Diverter Valve, 3-Way, 2 Position, External Drain, Normally Open.

**Features**

- High flow capacity
- Used as high flow switching or metering element
- Range of spring settings available
- Sealed pilot option available
- All external parts zinc plated

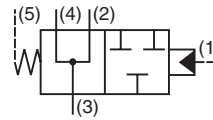
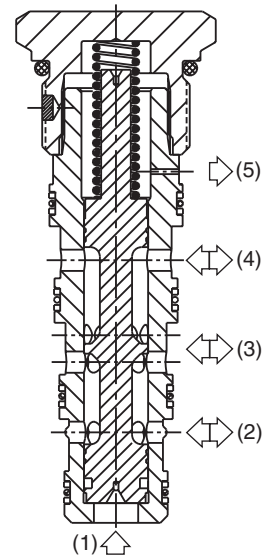
**Performance Curve**

**Pressure Drop vs. Flow (Through cartridge only)**

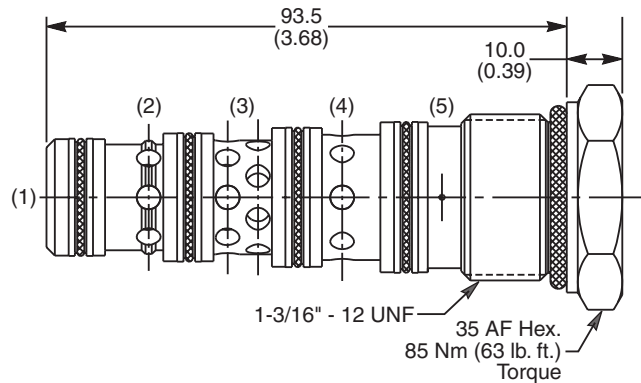


**Specifications**

<b>Rated Flow</b>	160 LPM (42.3 GPM)
<b>Nominal Flow @ 7 Bar (100 PSI)</b>	80 LPM (21 GPM)
<b>Maximum Inlet Pressure</b>	420 Bar (6000 PSI)
<b>Pilot Switching Pressure</b>	See ordering information
<b>Cartridge Material</b>	Steel operating parts, hardened steel spool.
<b>Operating Temp. Range/Seals</b>	-40°C to +93.3°C (Nitrile, Buna-N) (-40°F to +200°F) -31.7°C to +121.1°C (Fluorocarbon) (-25°F to +250°F)
<b>Fluid Compatibility/Viscosity</b>	Mineral-based or synthetic with lubricating properties at viscosities of 45 to 2000 SSU (6 to 420 cSt)
<b>Filtration</b>	ISO code 16/13, SAE Class 4 or better
<b>Approx. Weight</b>	.33 kg (.76 lbs.)
<b>Cavity</b>	5A (See BC Section for more details)



**Dimensions** Millimeters (Inches)



**Ordering Information**

**N5C125** —     
 Diverter Valve (All Ports Open)    Pilot Switching Pressure    Seals

Code	Switching Pressure
0.0	0.0 Bar (0 PSI)
5.0	5.0 Bar (73 PSI)
6.9	6.9 Bar (100 PSI) Std.
10.0	10.0 Bar (145 PSI)
15.0	15.0 Bar (217 PSI)

*If no switching pressure is specified, valve will be supplied as N5C125-6.9N*

Code	Seals / Kit No.
N	Nitrile, Buna-N / (SK30103N-1)
V	Fluorocarbon / (SK30103V-1)

**Order Bodies Separately**

**LB10**     
 Line Body    Porting    Body Material

Code	Porting
314	3/4" BSP (main) 1/4" BSP (aux)
321	3/4" SAE (main) 1/4" SAE (aux)

Code	Body Material
A	Aluminum
S	Steel

**General Description**

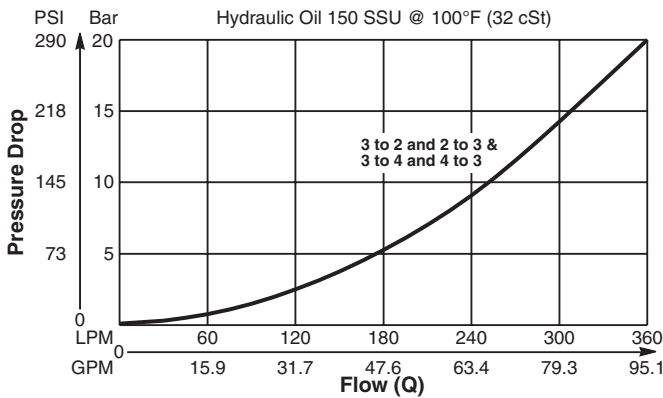
Diverter Valve, 3-Way, 2 Position, External Drain, Normally Open.

**Features**

- High flow capacity
- Used as high flow switching or metering element
- Range of spring settings available
- All external parts zinc plated

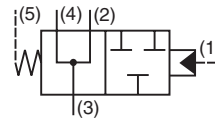
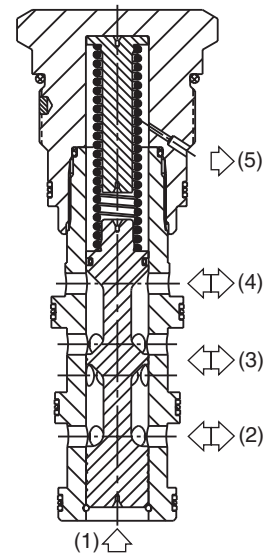
**Performance Curve**

**Pressure Drop vs. Flow (Through cartridge only)**

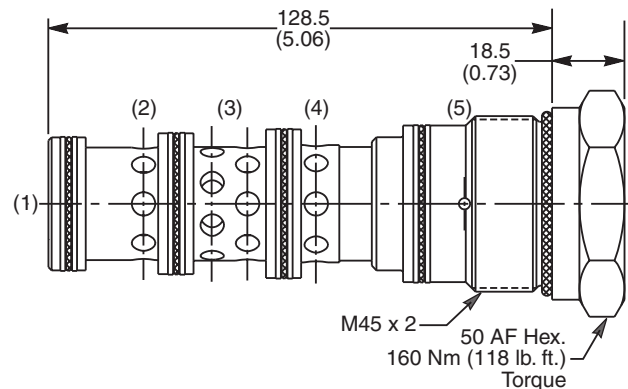


**Specifications**

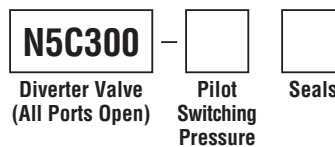
<b>Rated Flow</b>	400 LPM (105 GPM)
<b>Nominal Flow @ 7 Bar (100 PSI)</b>	3 to 2 - 130 LPM (34 GPM) 3 to 4 - 240 LPM (63 GPM)
<b>Maximum Inlet Pressure</b>	420 Bar (6000 PSI)
<b>Pilot Switching Pressure</b>	See ordering information
<b>Cartridge Material</b>	Steel operating parts, hardened steel spool.
<b>Operating Temp. Range/Seals</b>	-40°C to +93.3°C (Nitrile, Buna-N) (-40°F to +200°F) -31.7°C to +121.1°C (Fluorocarbon) (-25°F to +250°F)
<b>Fluid Compatibility/Viscosity</b>	Mineral-based or synthetic with lubricating properties at viscosities of 45 to 2000 SSU (6 to 420 cSt)
<b>Filtration</b>	ISO code 16/13, SAE Class 4 or better
<b>Approx. Weight</b>	1.00 kg (2.2 lbs.)
<b>Cavity</b>	100-1 (See BC Section for more details)



**Dimensions** Millimeters (Inches)



**Ordering Information**

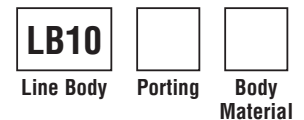


Code	Switching Pressure
3.0	3.0 Bar (44 PSI)
6.9	6.9 Bar (100 PSI) Std.
10.0	10.0 Bar (145 PSI)

*If no switching pressure is specified, valve will be supplied as N5C300-6.9N*

Code	Seals / Kit No.
N	Nitrile, Buna-N / (SK30065N-1)
V	Fluorocarbon / (SK30065V-1)

**Order Bodies Separately**



Code	Porting
316	1-1/4" BSP (main) 3/8" BSP (aux)
317	1-1/4" SAE (main) 3/8" SAE (aux)

Code	Body Material
A	Aluminum
S	Steel

**CV** Check Valves  
**SH** Shuttle Valves  
**LM** Load/Motor Controls  
**FC** Flow Controls  
**PC** Pressure Controls  
**LE** Logic Elements  
**DC** Directional Controls  
**MV** Manual Valves  
**SV** Solenoid Valves  
**PV** Proportional Valves  
**CE** Coils & Electronics  
**BC** Bodies & Cavities  
**TD** Technical Data

**Technical Information**

- CV** Check Valves
- SH** Shuttle Valves
- LM** Load/Motor Controls
- FC** Flow Controls
- PC** Pressure Controls
- LE** Logic Elements
- DC** Directional Controls
- MV** Manual Valves
- SV** Solenoid Valves
- PV** Proportional Valves
- CE** Coils & Electronics
- BC** Bodies & Cavities
- TD** Technical Data

**General Description**

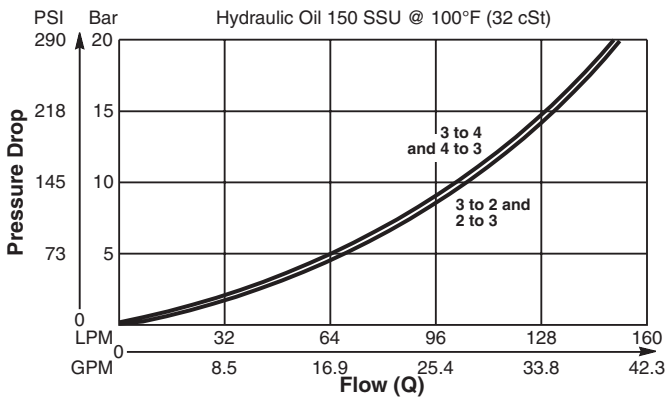
Diverter Valve, 3-Way, 2 Position, External Drain, Normally Closed.

**Features**

- High flow capacity
- Used as high flow switching or metering element
- Range of spring settings available
- Sealed pilot option available
- All external parts zinc plated

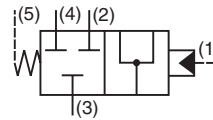
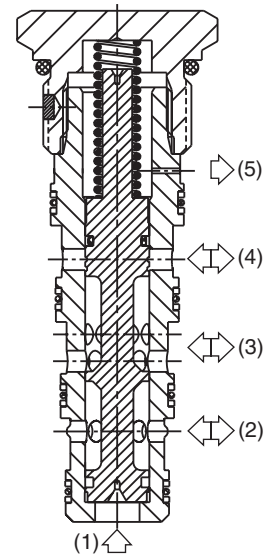
**Performance Curve**

**Pressure Drop vs. Flow (Through cartridge only)**

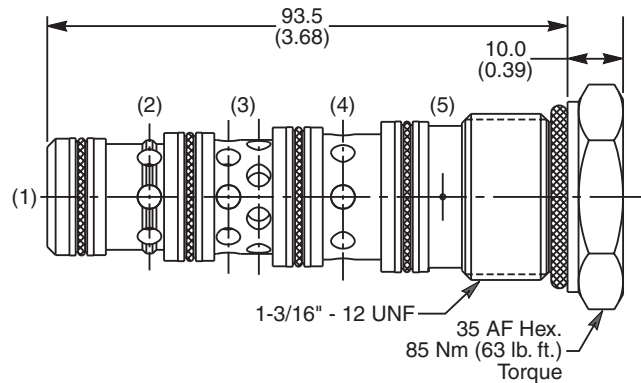


**Specifications**

<b>Rated Flow</b>	160 LPM (42.3 GPM)
<b>Nominal Flow @ 7 Bar (100 PSI)</b>	80 LPM (21 GPM)
<b>Maximum Inlet Pressure</b>	420 Bar (6000 PSI)
<b>Pilot Switching Pressure</b>	See ordering information
<b>Cartridge Material</b>	Steel operating parts, hardened steel spool.
<b>Operating Temp. Range/Seals</b>	-40°C to +93.3°C (Nitrile, Buna-N) (-40°F to +200°F) -31.7°C to +121.1°C (Fluorocarbon) (-25°F to +250°F)
<b>Fluid Compatibility/Viscosity</b>	Mineral-based or synthetic with lubricating properties at viscosities of 45 to 2000 SSU (6 to 420 cSt)
<b>Filtration</b>	ISO code 16/13, SAE Class 4 or better
<b>Approx. Weight</b>	.33 kg (.76 lbs.)
<b>Cavity</b>	5A (See BC Section for more details)



**Dimensions** Millimeters (Inches)



**Ordering Information**

**N5D125** —

Diverter Valve (All Ports Closed)    Pilot Switching Pressure    Seals

Code	Switching Pressure
0.0	0.0 Bar (0 PSI)
5.0	5.0 Bar (73 PSI)
6.9	6.9 Bar (100 PSI) Std.
10.0	10.0 Bar (145 PSI)
15.0	15.0 Bar (217 PSI)

*If no switching pressure is specified, valve will be supplied as N5D125-6.9N*

Code	Seals / Kit No.
N	Nitrile, Buna-N / (SK30103N-1)
V	Fluorocarbon / (SK30103V-1)

**Order Bodies Separately**

**LB10**

Line Body    Porting    Body Material

Code	Porting
314	3/4" BSP (main) 1/4" BSP (aux)
321	3/4" SAE (main) 1/4" SAE (aux)

Code	Body Material
A	Aluminum
S	Steel



**General Description**

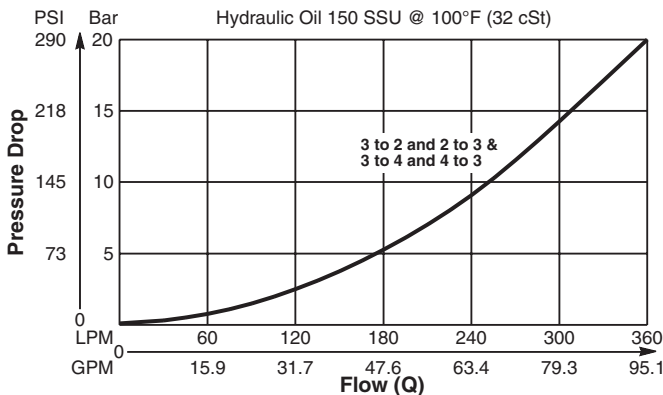
Diverter Valve, 3-Way, 2 Position, External Drain, Normally Closed.

**Features**

- High flow capacity
- Used as high flow switching or metering element
- Range of spring settings available
- All external parts zinc plated

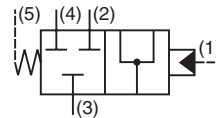
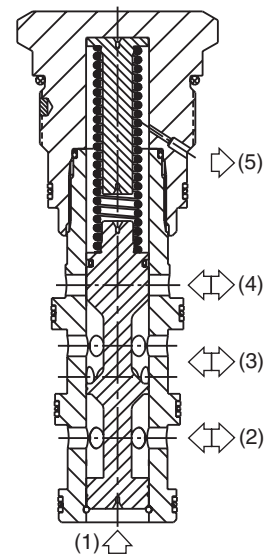
**Performance Curve**

**Pressure Drop vs. Flow (Through cartridge only)**

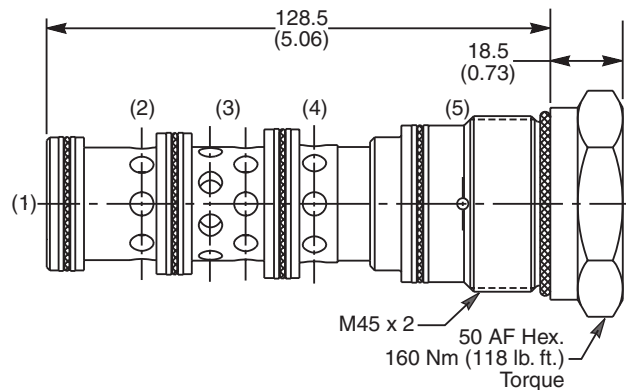


**Specifications**

<b>Rated Flow</b>	400 LPM (105 GPM)
<b>Nominal Flow @ 7 Bar (100 PSI)</b>	3 to 2 - 200 LPM (53 GPM) 3 to 4 - 200 LPM (53 GPM)
<b>Maximum Inlet Pressure</b>	420 Bar (6000 PSI)
<b>Pilot Switching Pressure</b>	See ordering information
<b>Cartridge Material</b>	Steel operating parts, hardened steel spool.
<b>Operating Temp. Range/Seals</b>	-40°C to +93.3°C (Nitrile, Buna-N) (-40°F to +200°F) -31.7°C to +121.1°C (Fluorocarbon) (-25°F to +250°F)
<b>Fluid Compatibility/Viscosity</b>	Mineral-based or synthetic with lubricating properties at viscosities of 45 to 2000 SSU (6 to 420 cSt)
<b>Filtration</b>	ISO code 16/13, SAE Class 4 or better
<b>Approx. Weight</b>	1.00 kg (2.2 lbs.)
<b>Cavity</b>	100-1 (See BC Section for more details)



**Dimensions** Millimeters (Inches)



**Ordering Information**

**N5D300** —     
 Diverter Valve (All Ports Closed)    Pilot Switching Pressure    Seals

Code	Switching Pressure
3.0	3.0 Bar (44 PSI)
6.9	6.9 Bar (100 PSI) Std.
10.0	10.0 Bar (145 PSI)

*If no switching pressure is specified, valve will be supplied as N5D300-6.9N*

Code	Seals / Kit No.
N	Nitrile, Buna-N / (SK30065N-1)
V	Fluorocarbon / (SK30065V-1)

**Order Bodies Separately**

**LB10**     
 Line Body    Porting    Body Material

Code	Porting
316	1-1/4" BSP (main) 3/8" BSP (aux)
317	1-1/4" SAE (main) 3/8" SAE (aux)

Code	Body Material
A	Aluminum
S	Steel

**CV** Check Valves

**SH** Shuttle Valves

**LM** Load/Motor Controls

**FC** Flow Controls

**PC** Pressure Controls

**LE** Logic Elements

**DC** Directional Controls

**MV** Manual Valves

**SV** Solenoid Valves

**PV** Proportional Valves

**CE** Coils & Electronics

**BC** Bodies & Cavities

**TD** Technical Data